

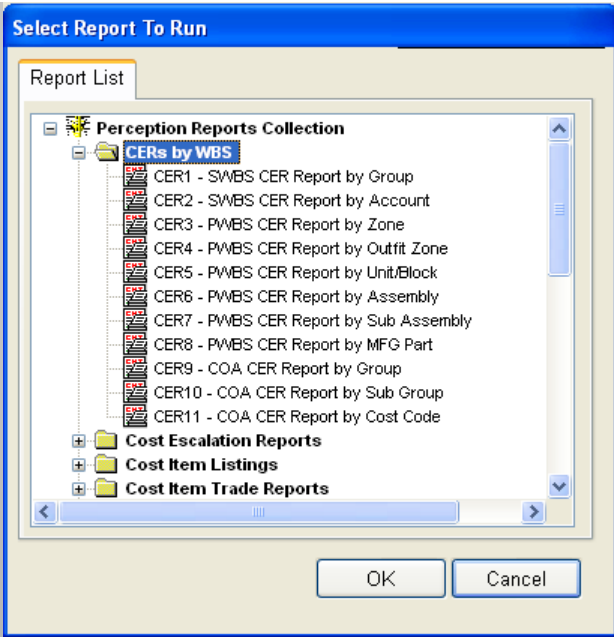
PERCEPTION®
***Integrated Shipyard Planning &
Management System***

Many Useful System Reports

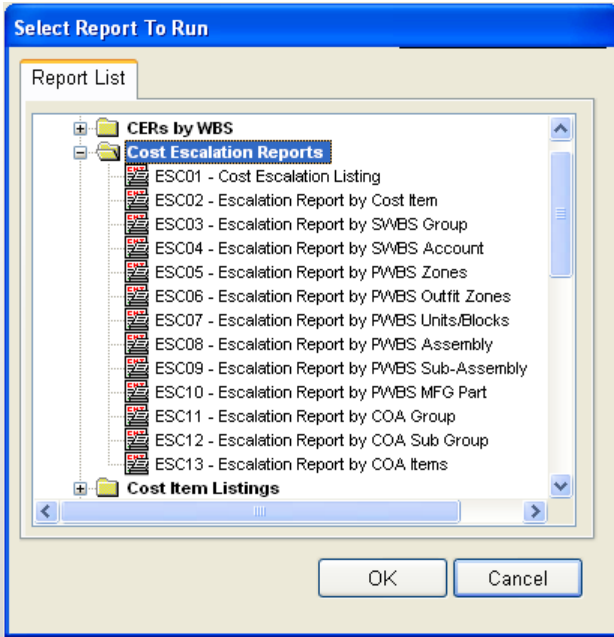
Reports Selected by Shipyard Department

- Estimating
- Engineering
- Planning & Scheduling
- Production Engineering
- Material Control
- Purchasing
- Accounting

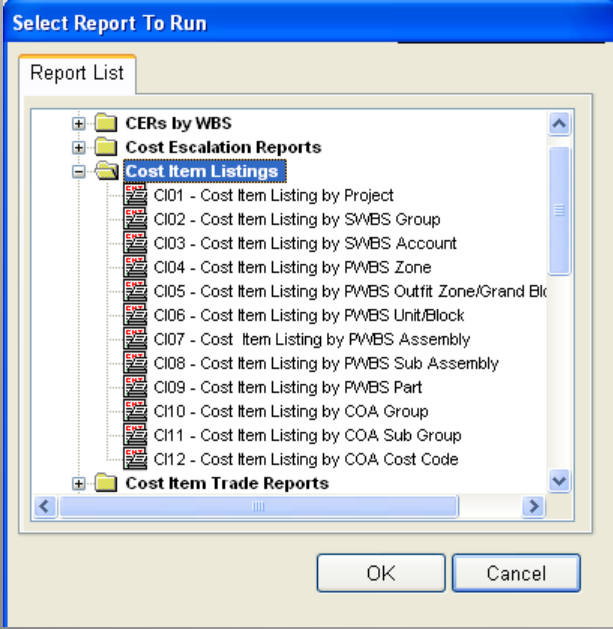
Estimating Reports



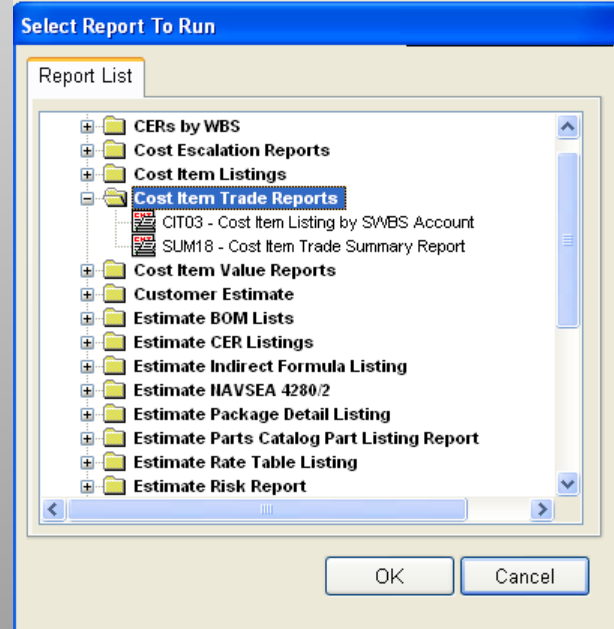
CER Reports by WBS



Cost Escalation Reports

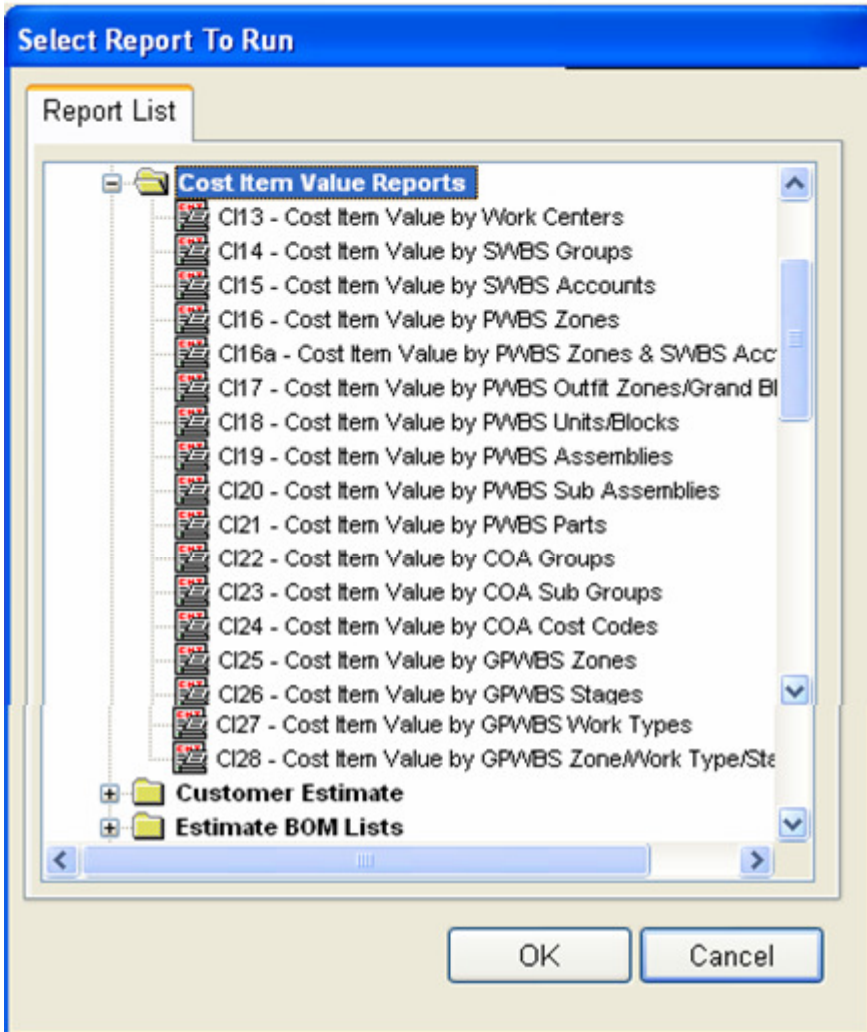


Cost Item Detail Reports

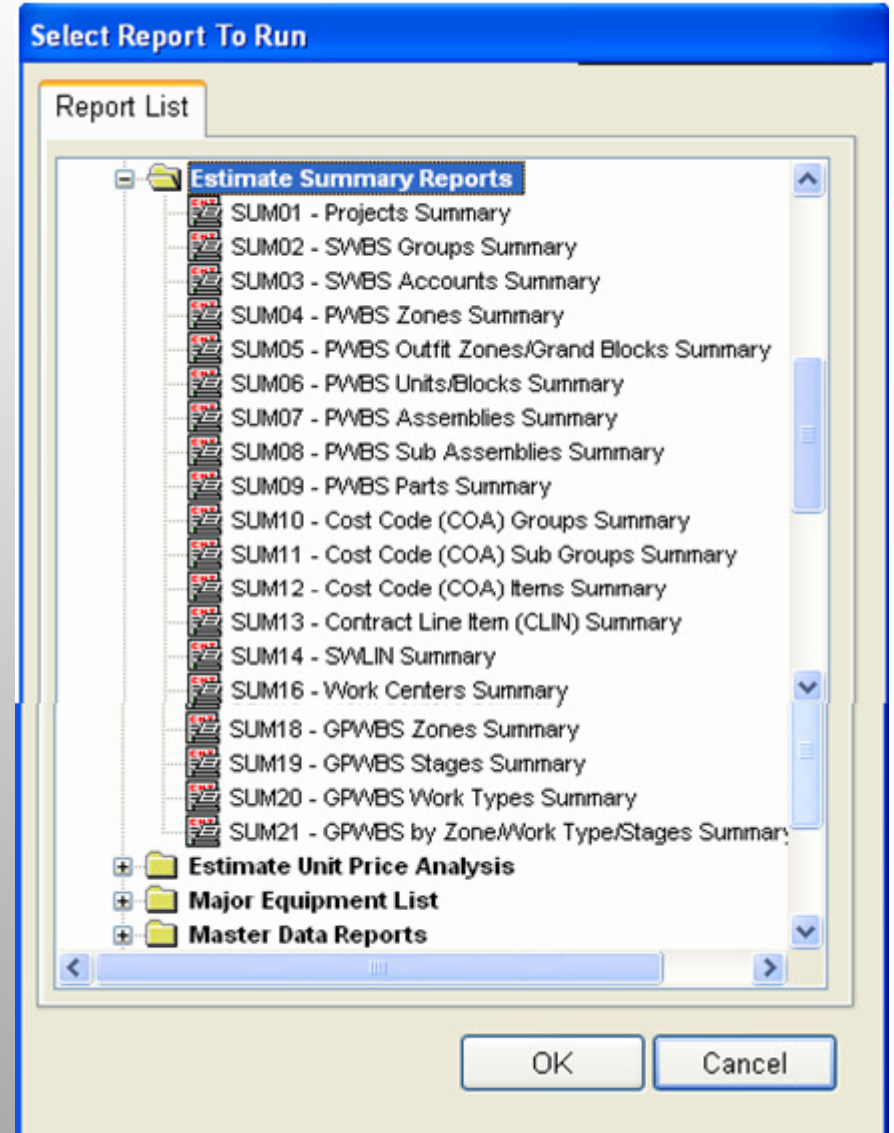


Cost Item Trade Reports

Estimating Reports

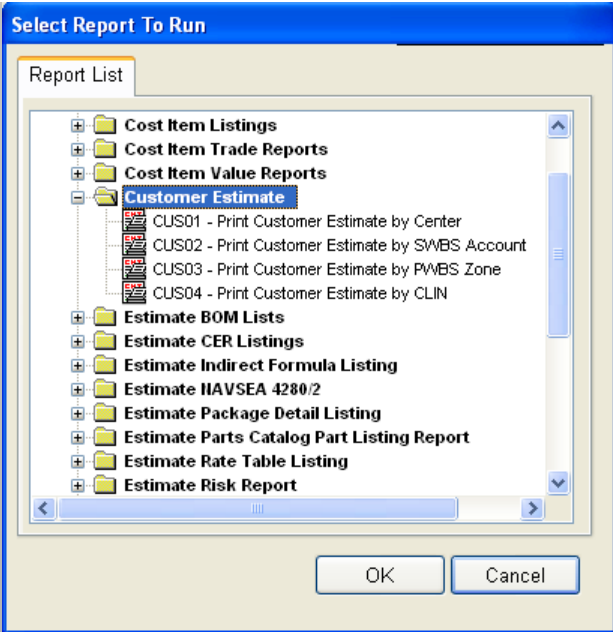


Cost Item Value Reports

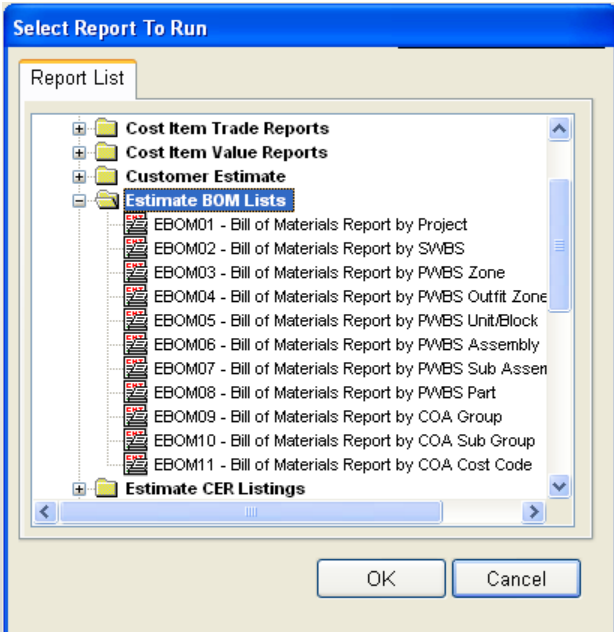


Estimate Summary Reports⁴

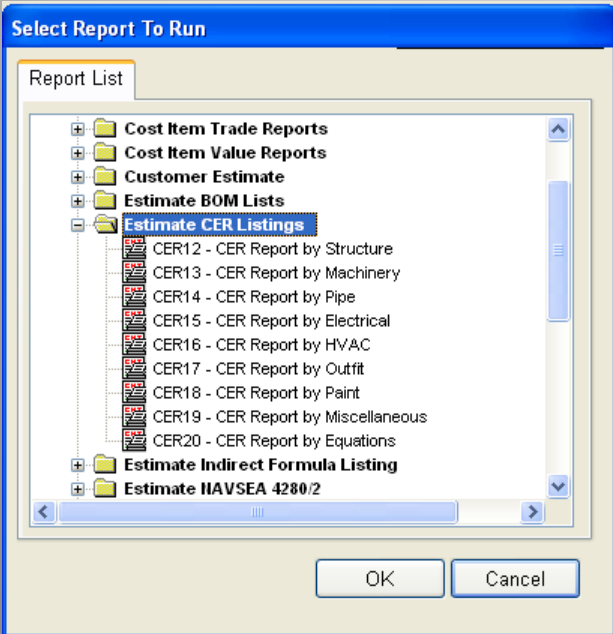
Estimating Reports



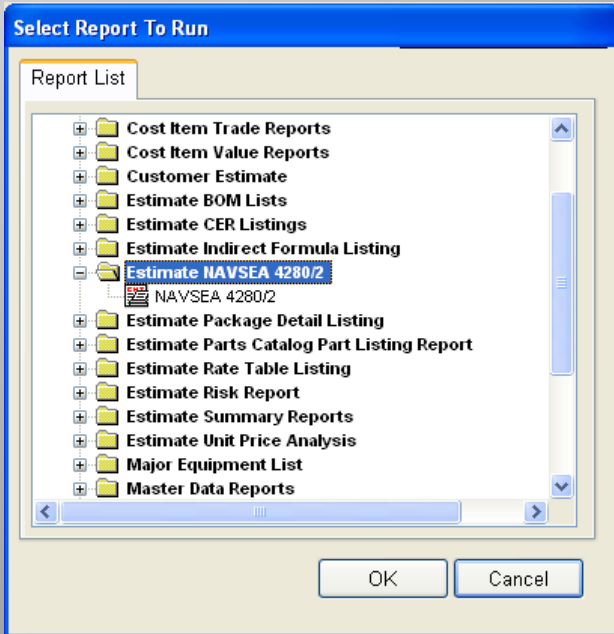
Customer Bid Estimate Reports



Estimate BOM Listings

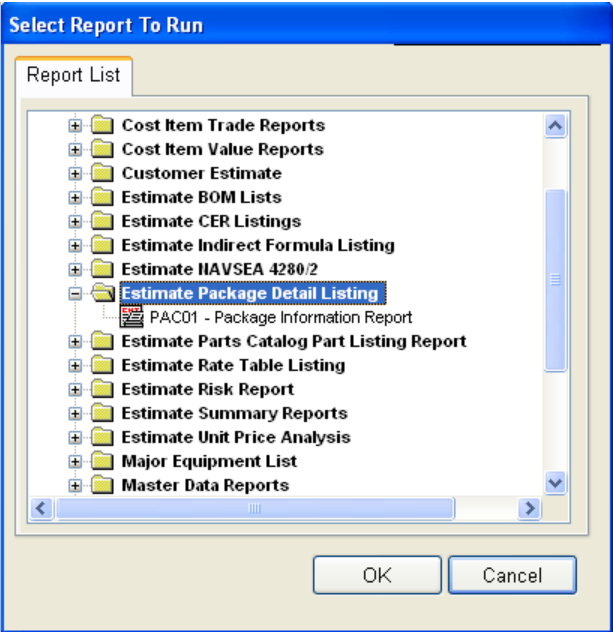


Estimate CER Listings

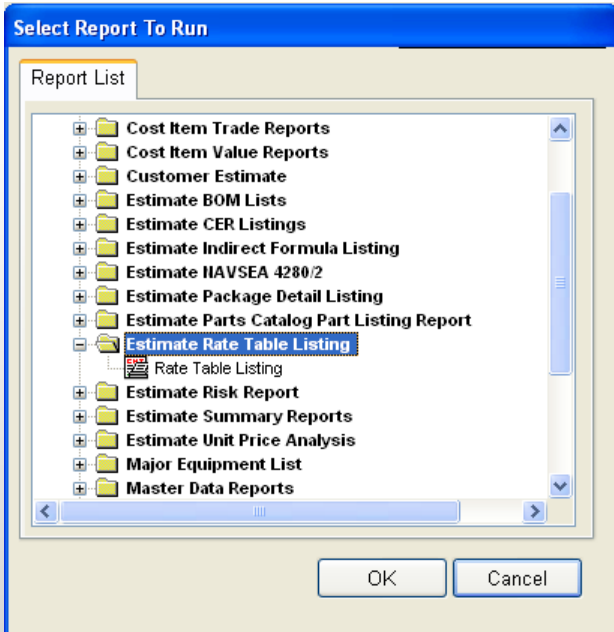


NAVSEA 4180/2 Reports

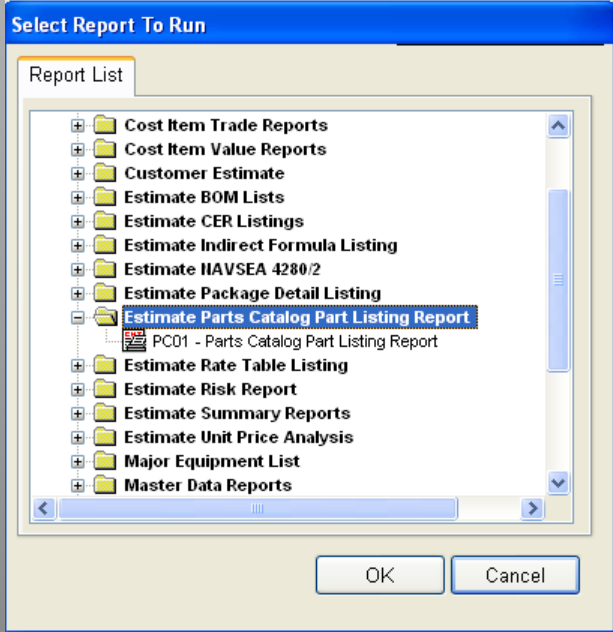
Estimating Reports



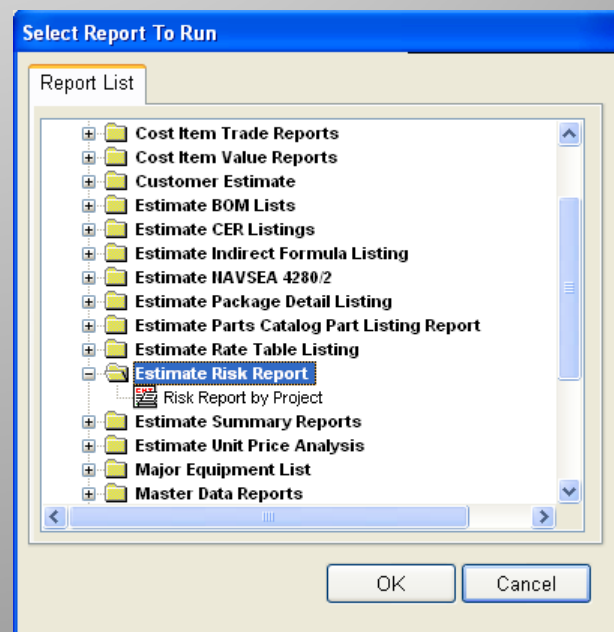
Estimate Package Detail Listings



Estimate Rate Table Listings

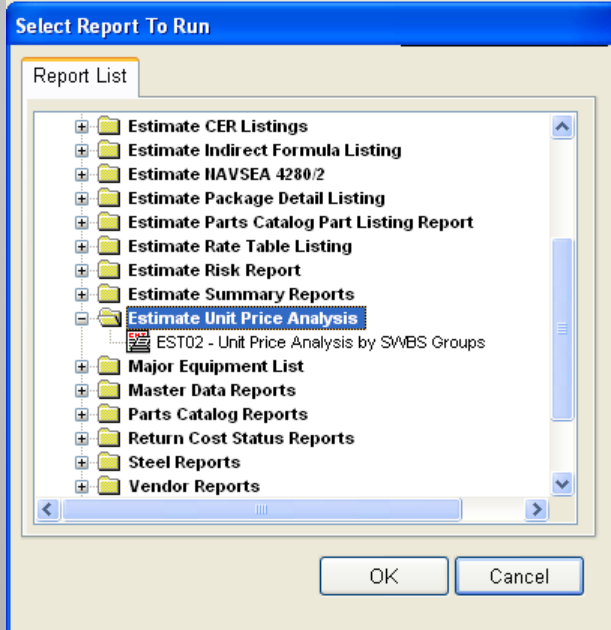


Estimate Part Listings Reports

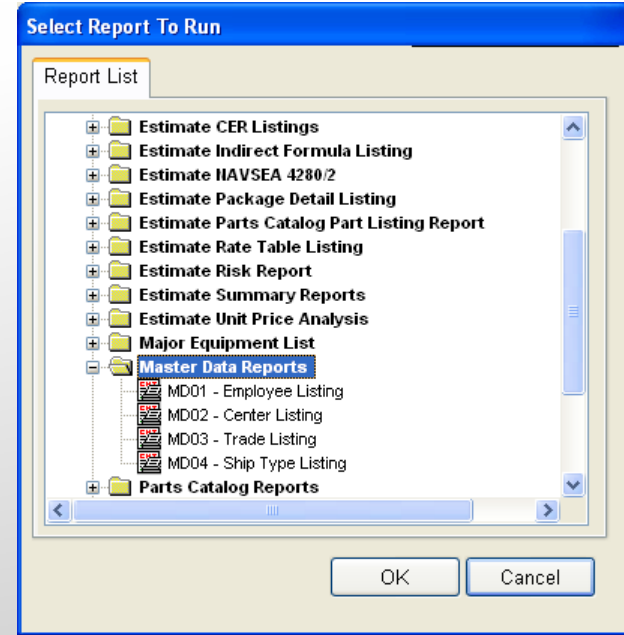


Estimate Risk Reports

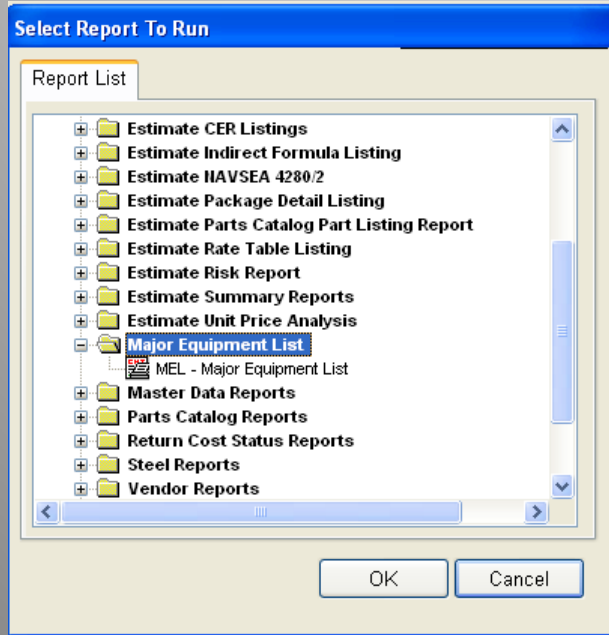
Estimating Reports



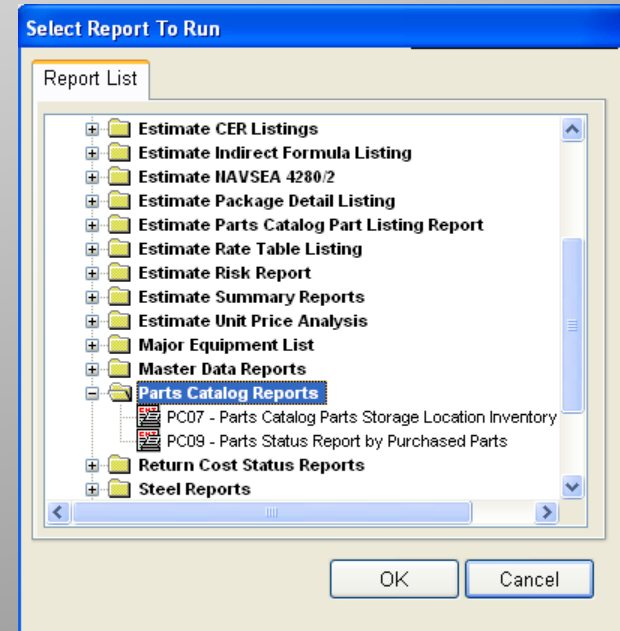
Estimate Unit Price Analysis



Master Data Reports

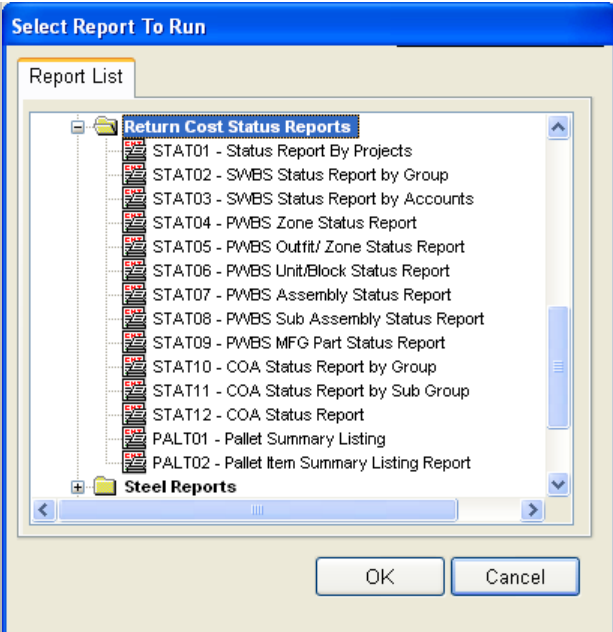


Major Equipment List

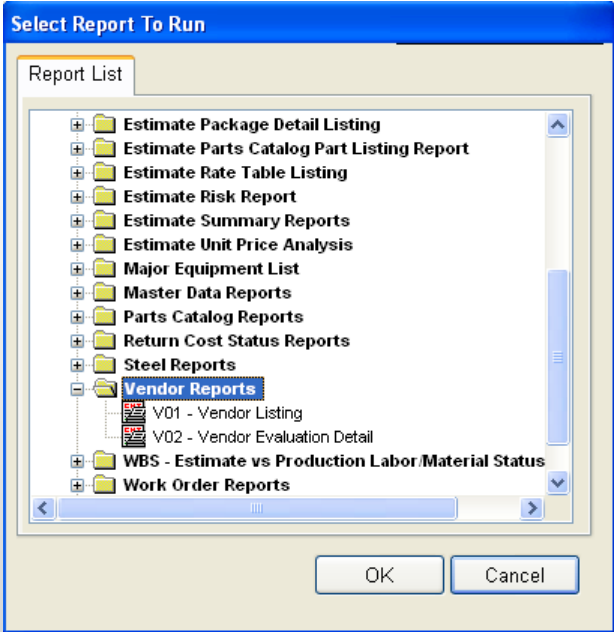


Parts Catalog Reports

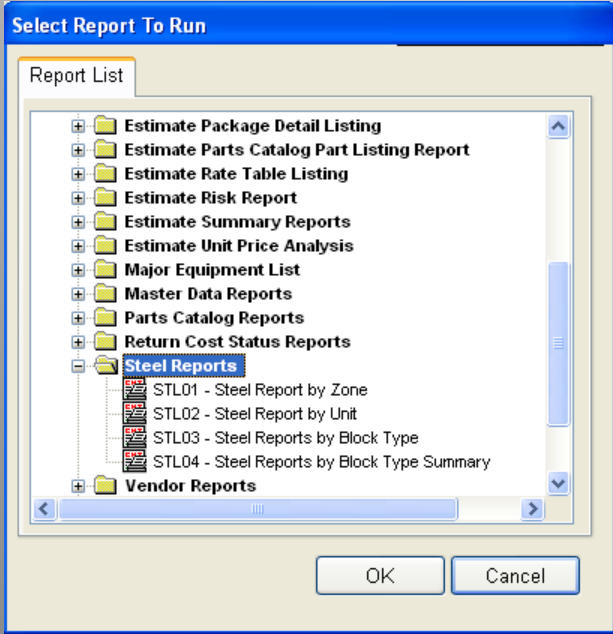
Estimating Reports



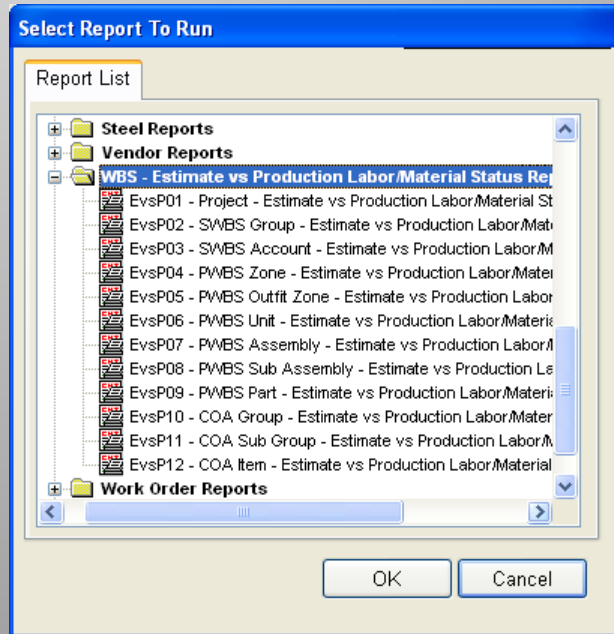
Return Cost Status Reports



Vendor Reports

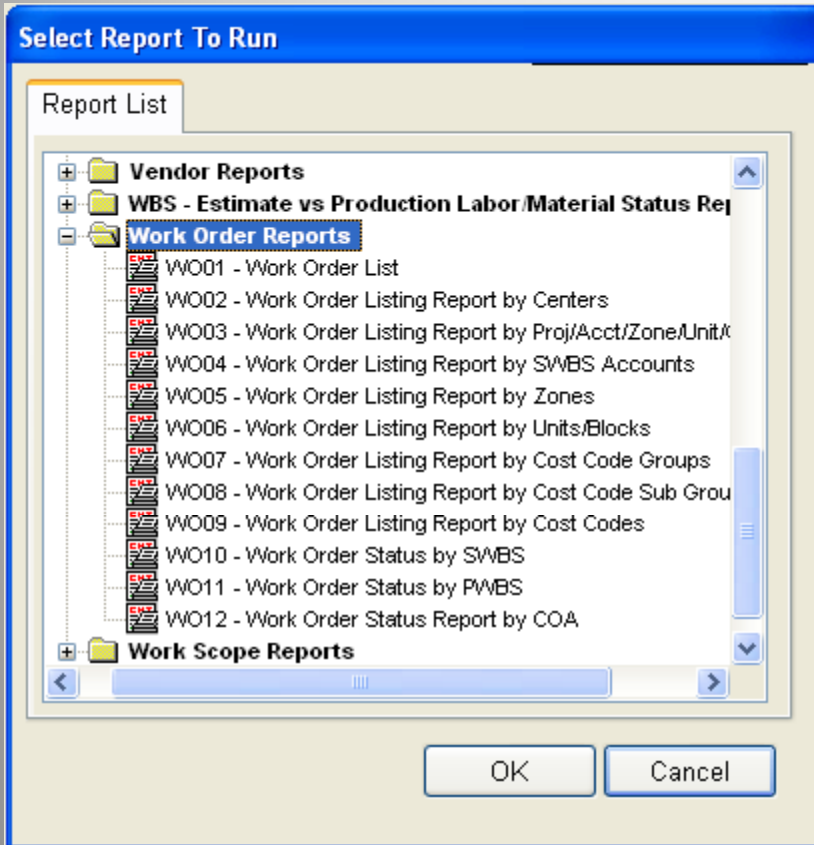


Steel Production Reports

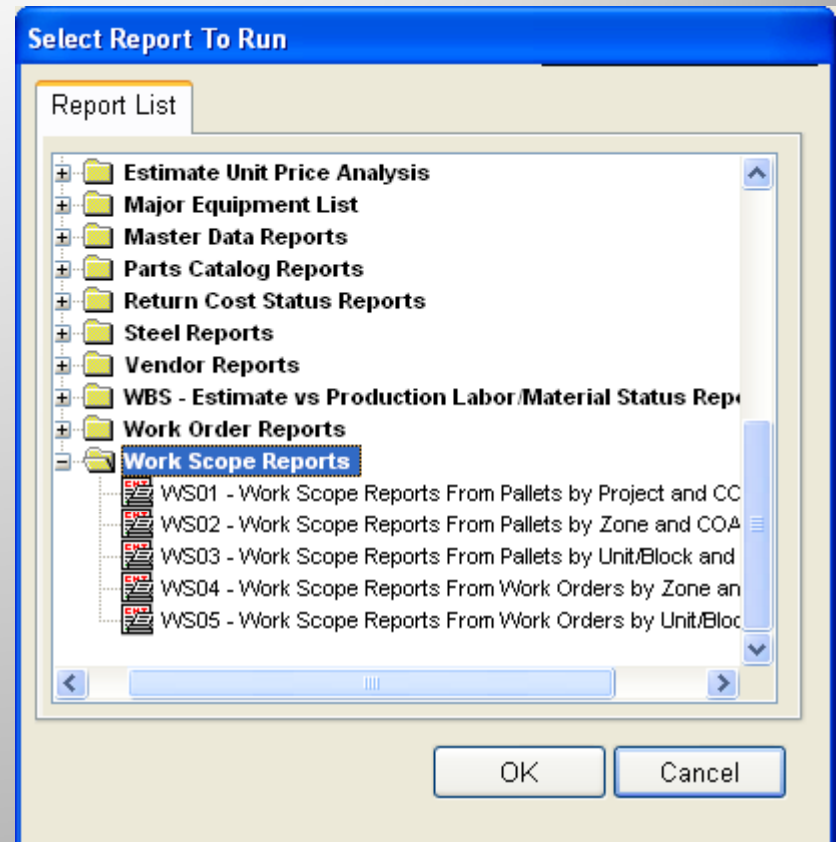


Estimate Vs Production Status

Estimating Reports

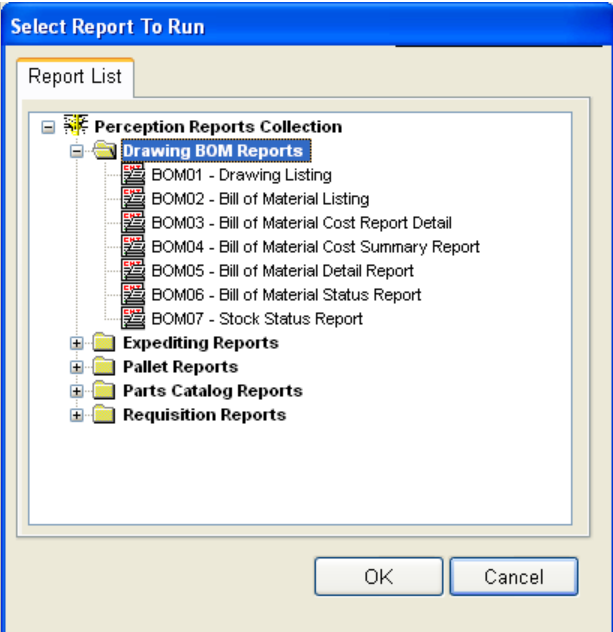


Work Order Listings

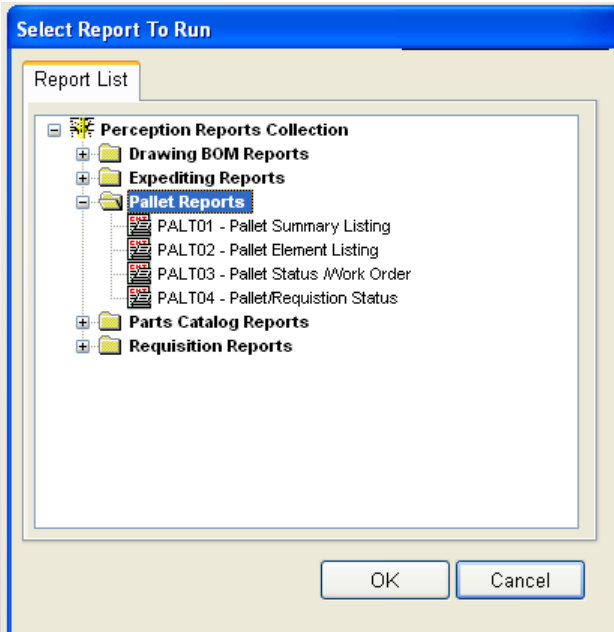


Work Scope Reports

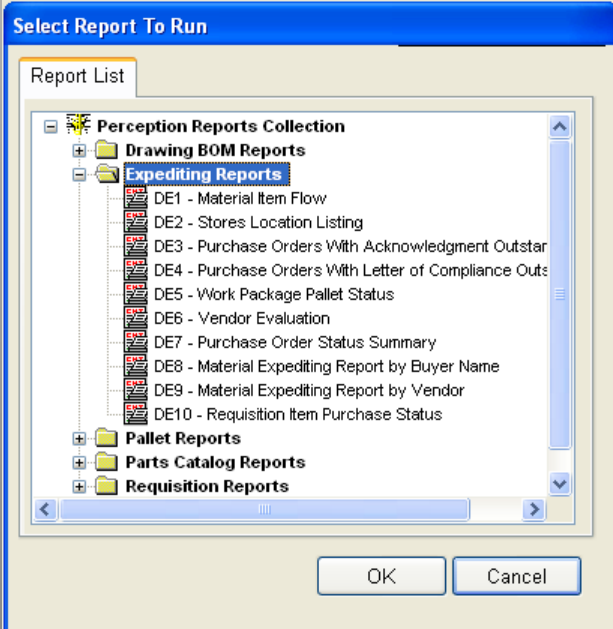
Engineering Reports



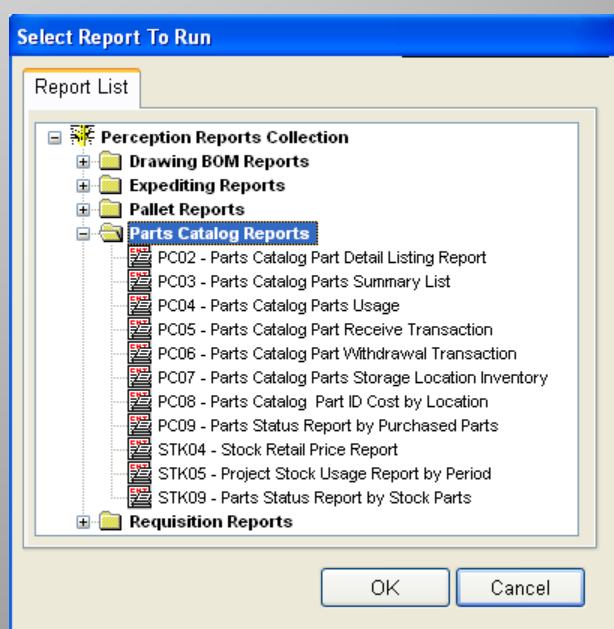
Drawing BOM Reports



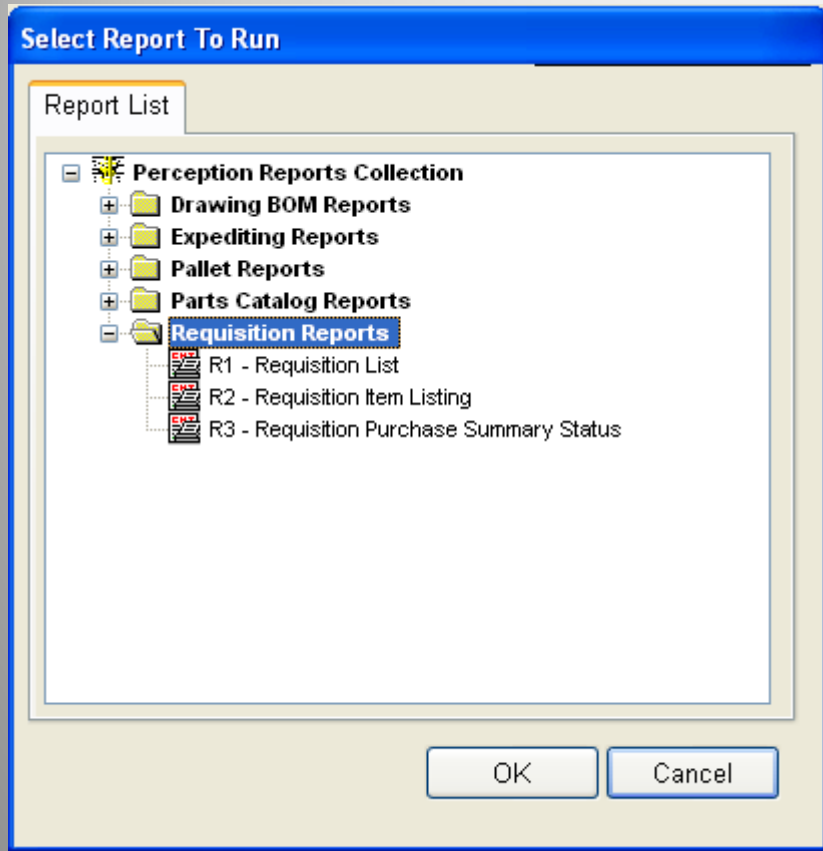
Production Pallet Reports



Purchase Expediting Reports

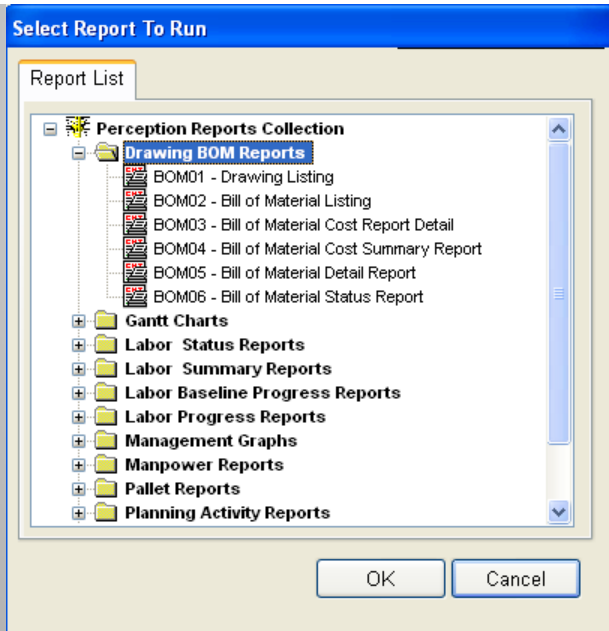


Parts Catalog Reports

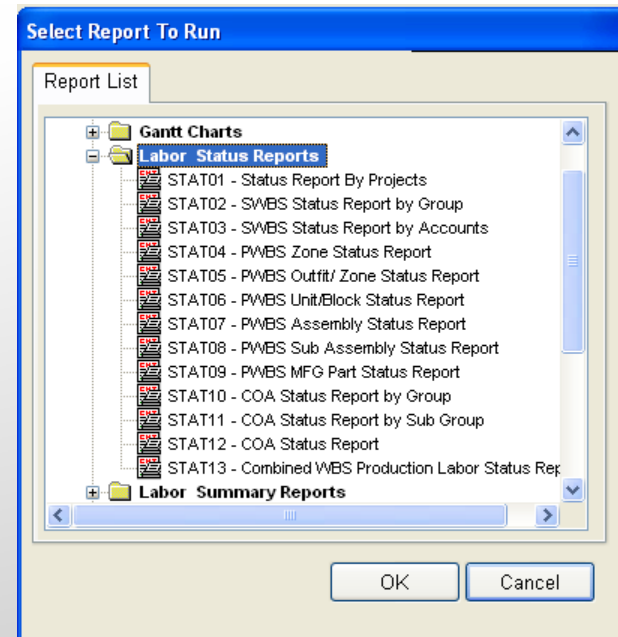


Material Requisition Reports

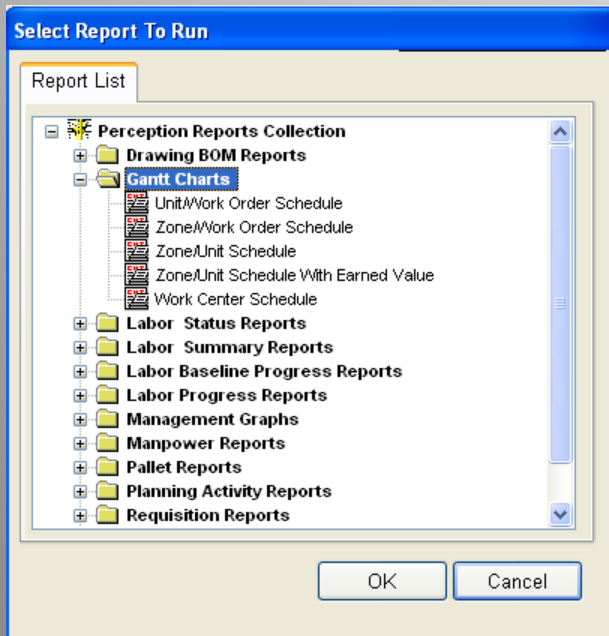
Engineering Reports



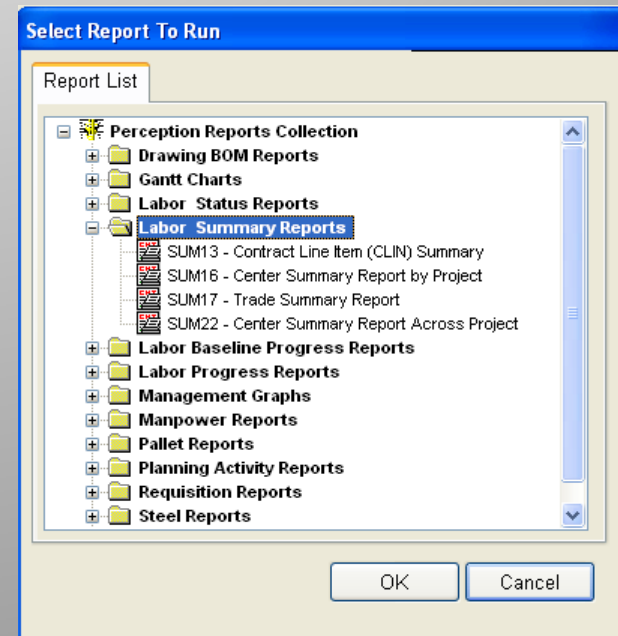
Drawing BOM Reports



Labor Status Reports

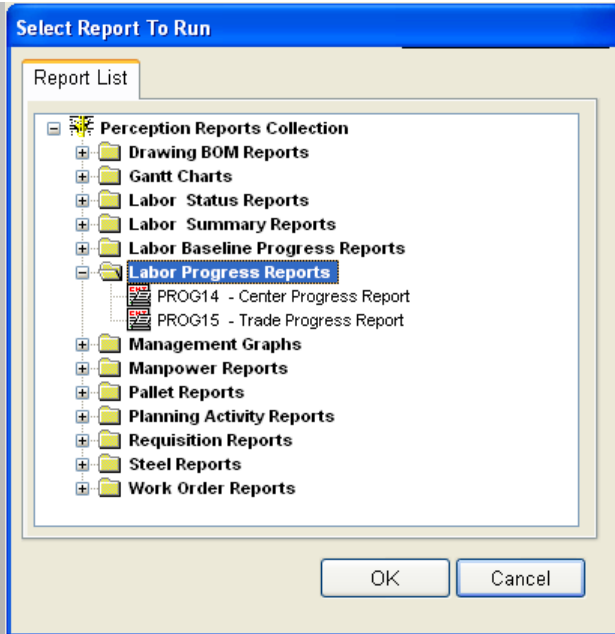


Gantt Charts

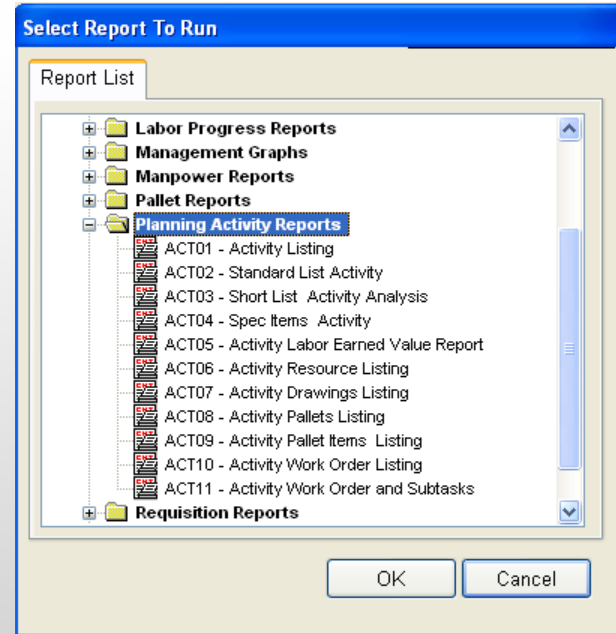


Labor Summary Reports

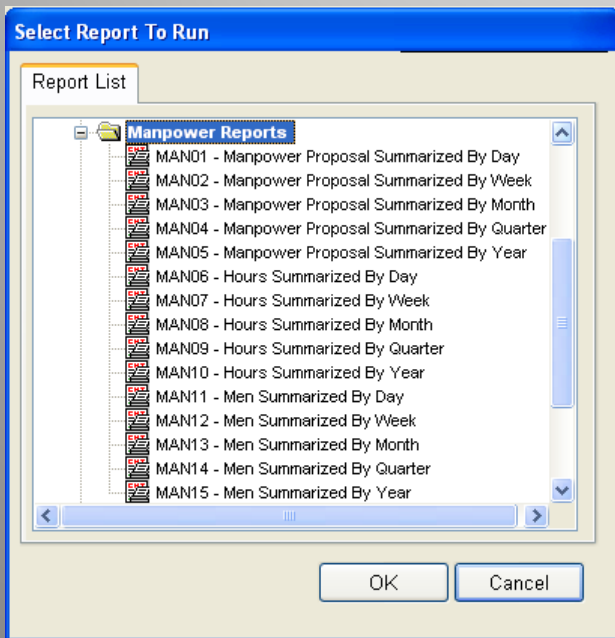
Planning Reports



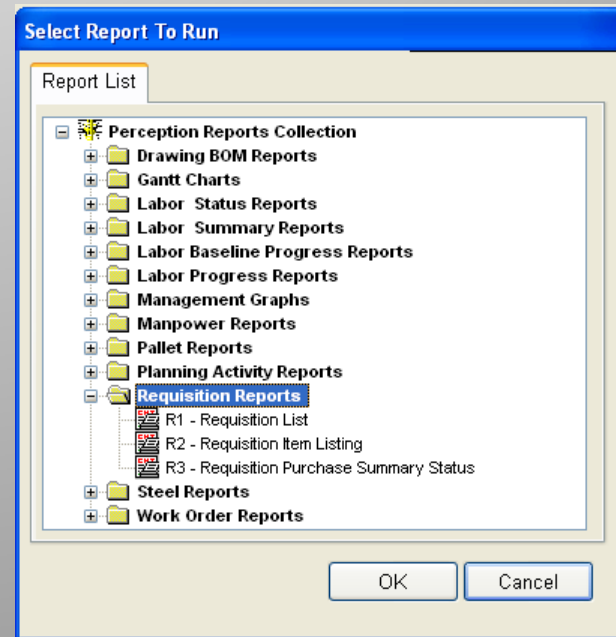
Labor Progress Reports



Planning Activity Reports

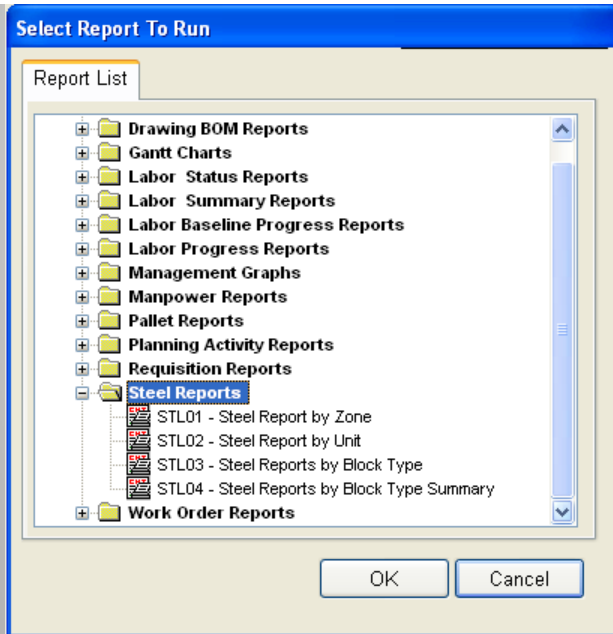


Manpower Reports

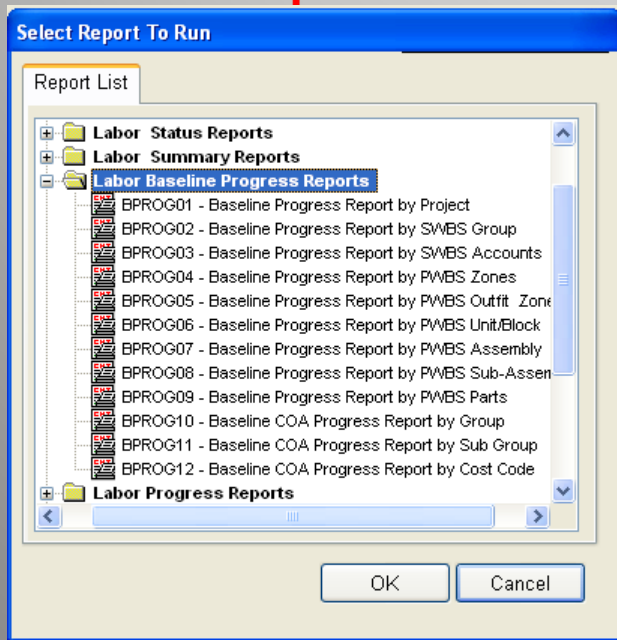


Requisition Reports

Planning Reports

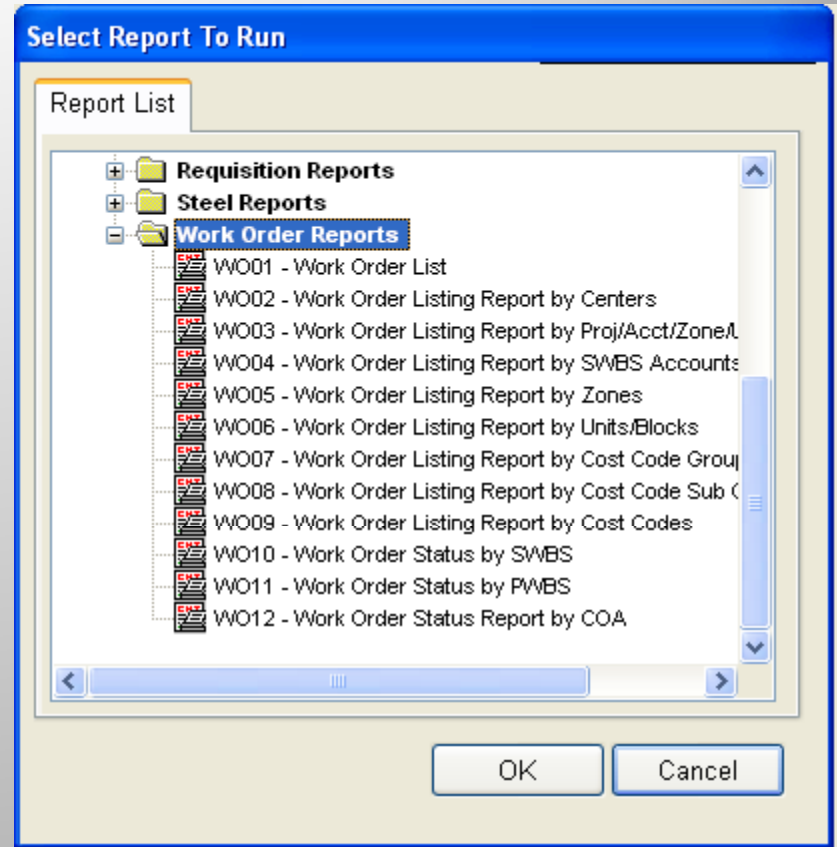


Steel Reports



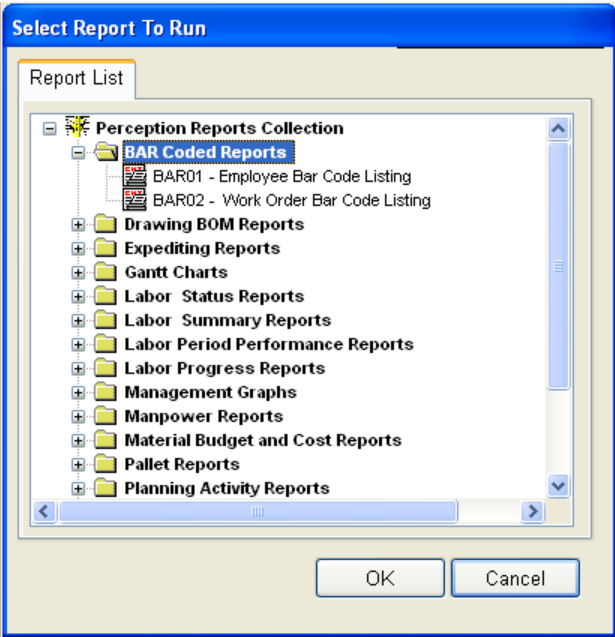
Planning Baseline Reports

Planning Reports

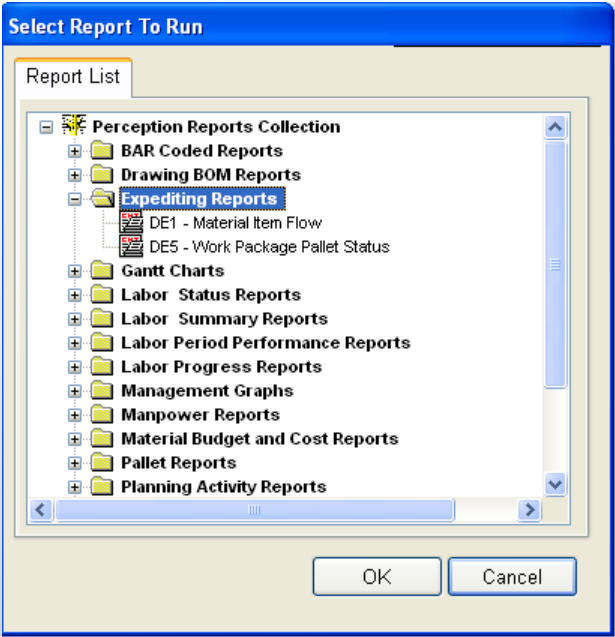


Work Order Reports

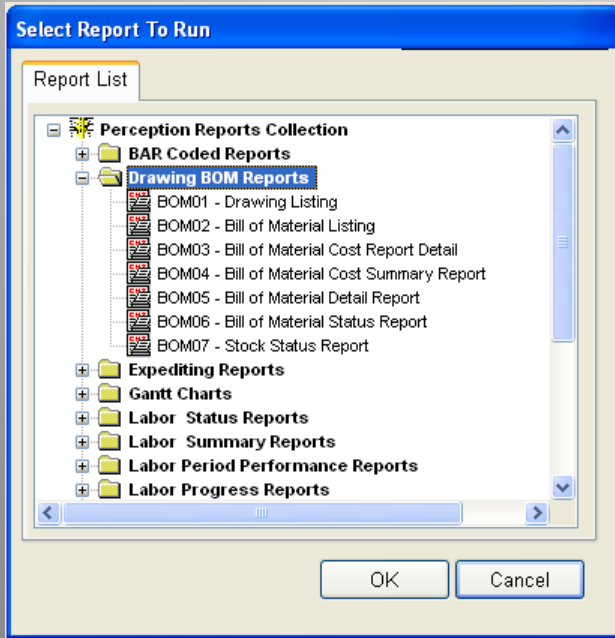
Production Engineering Reports



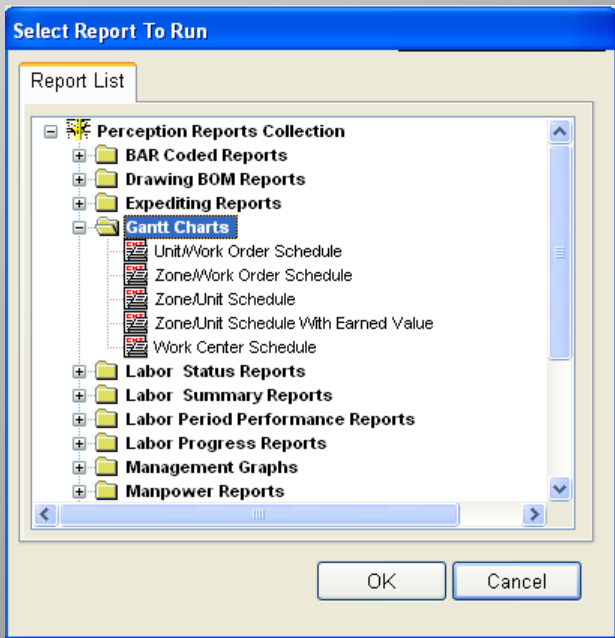
Bar Coded Reports



Purchase Expediting Reports

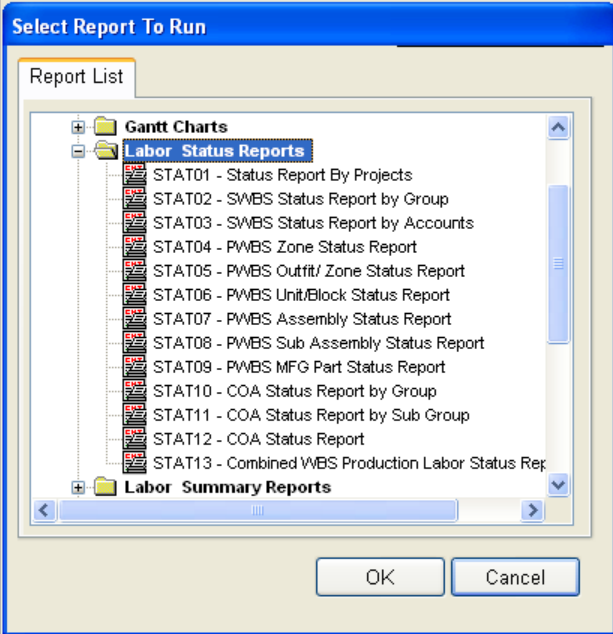


Drawing BOM Reports

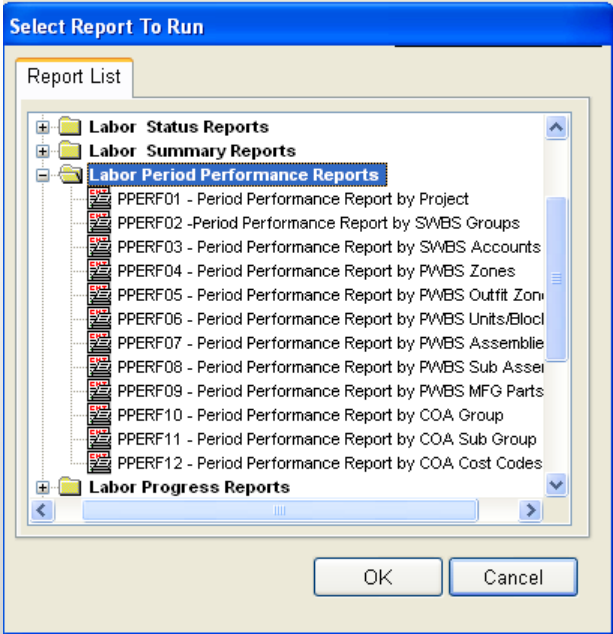


Gantt Charts

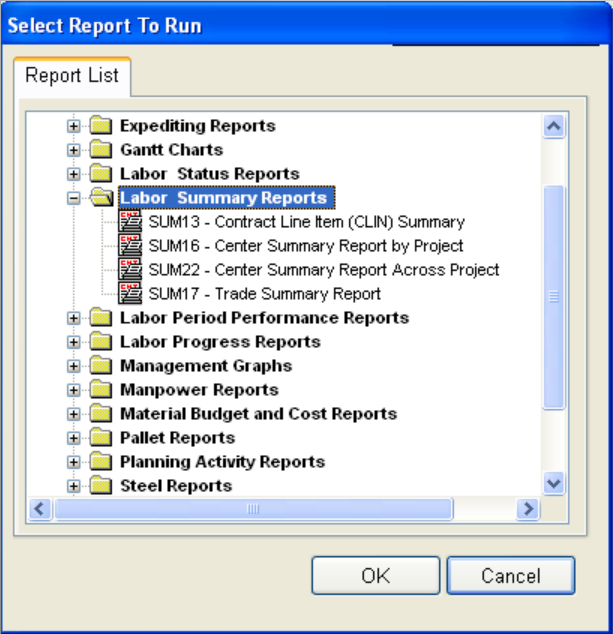
Production Engineering Reports



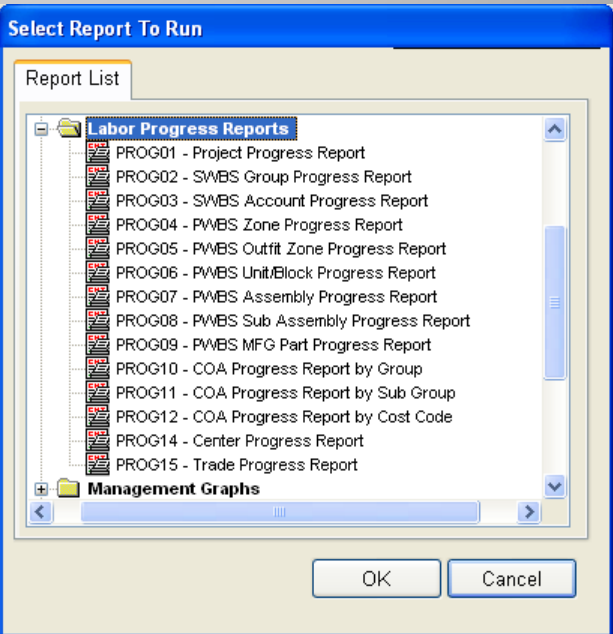
Labor Status Reports



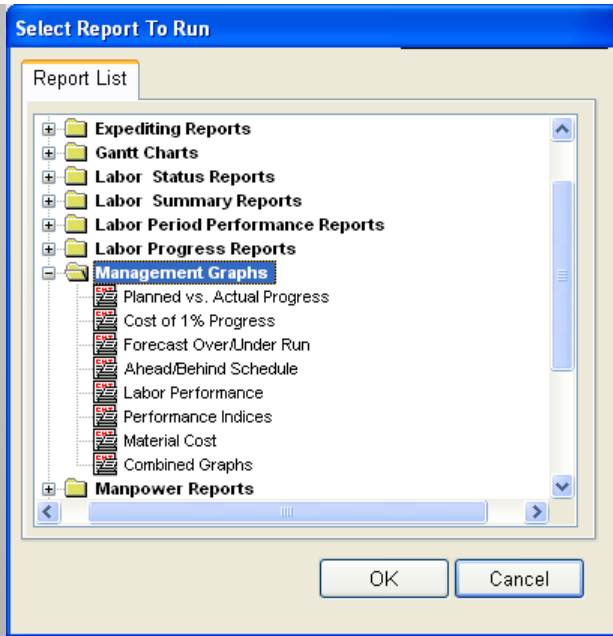
Labor Period Performance Reports



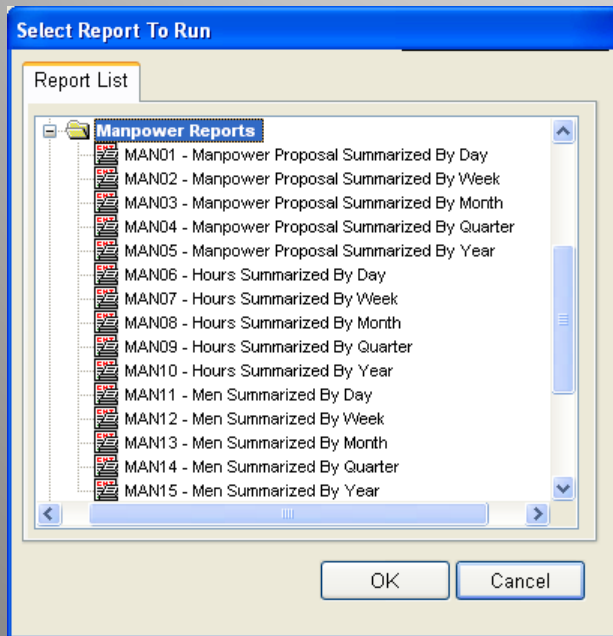
Labor Summary Reports



Labor Progress Reports

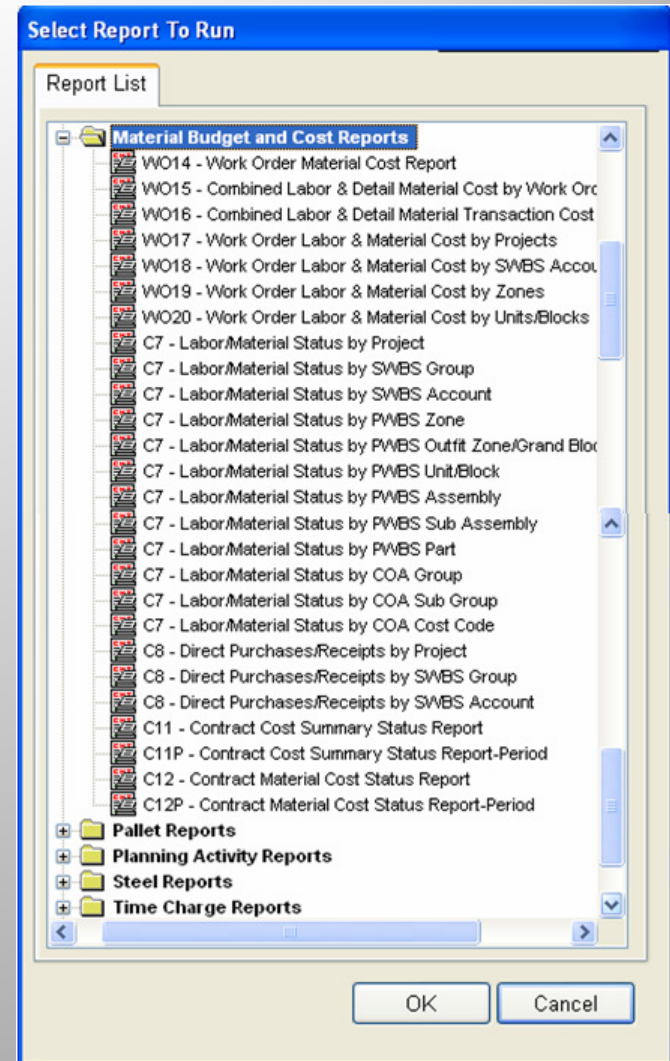


Management Graphics



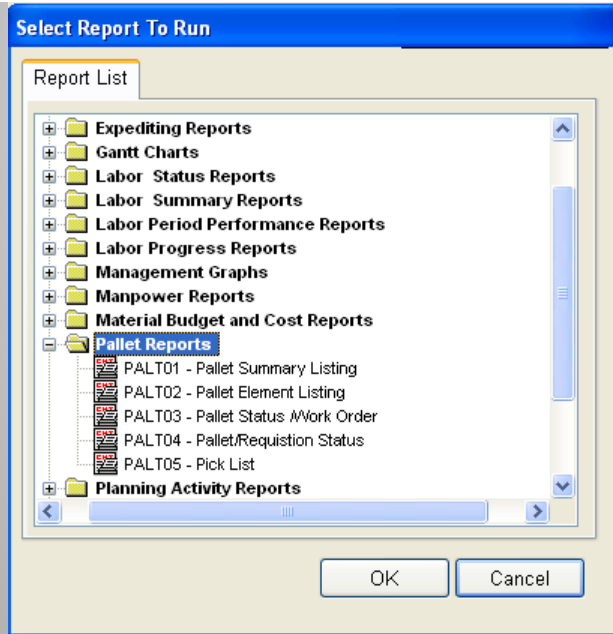
Manpower Reports

Production Engineering Reports

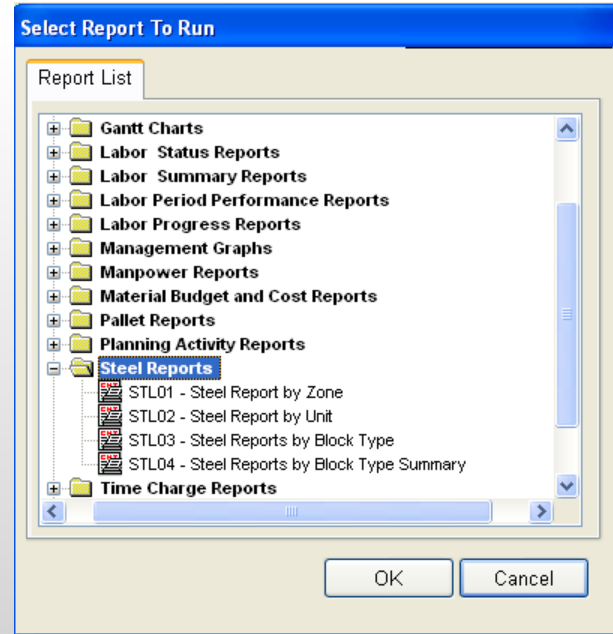


Material Budget & Cost Reports

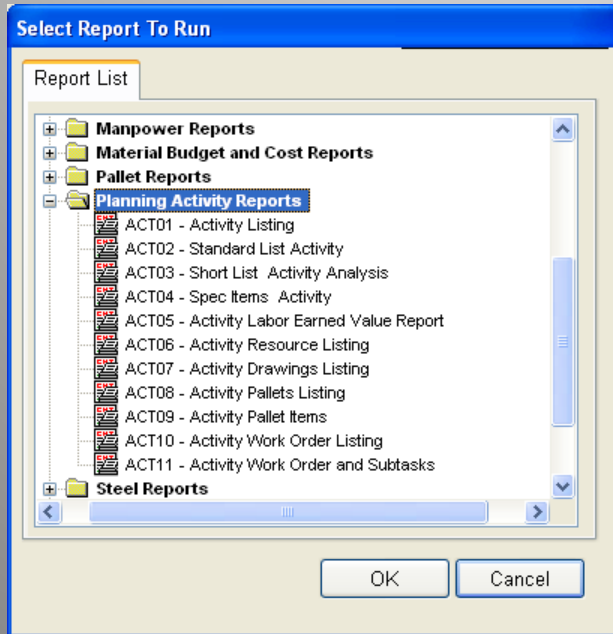
Production Engineering Reports



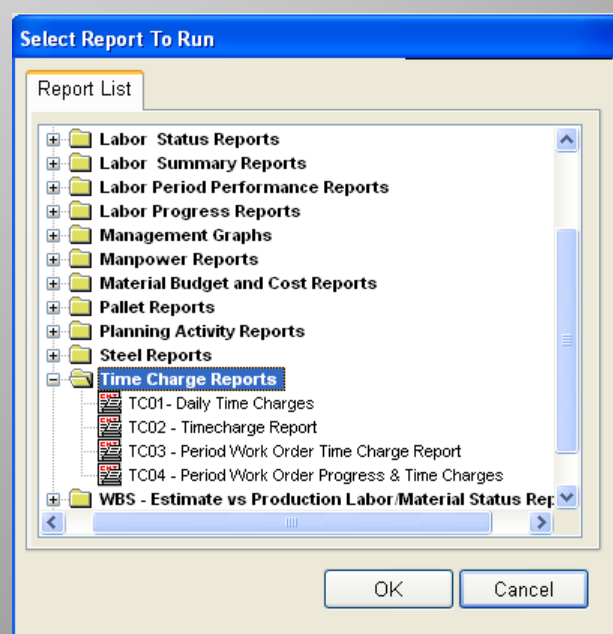
Production Pallet Reports



Steel Reports

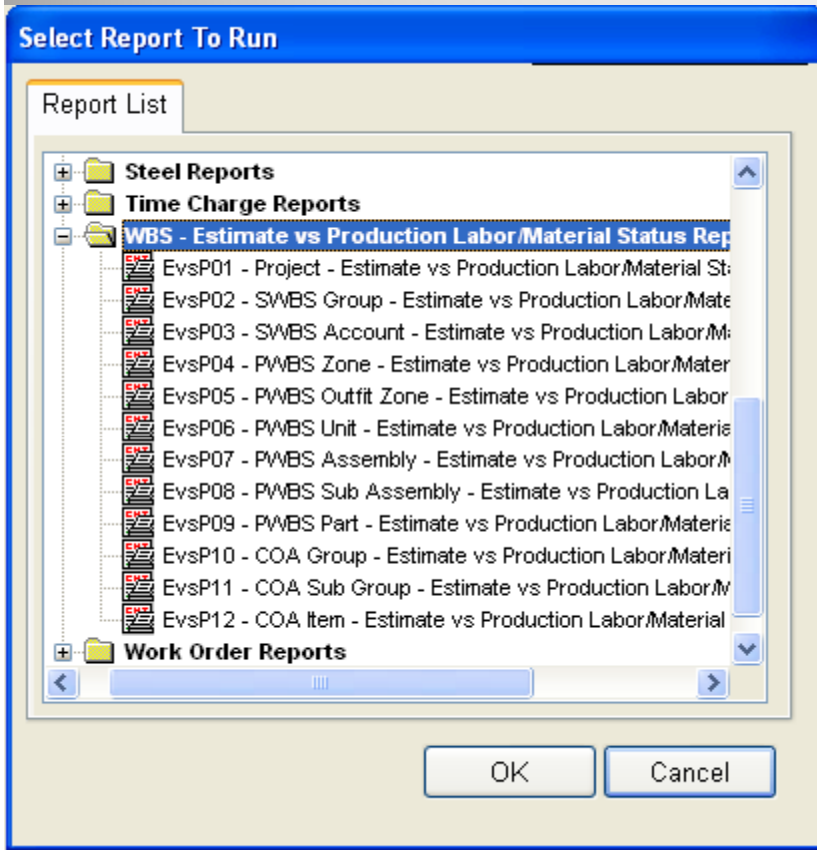


Planning Activity Reports

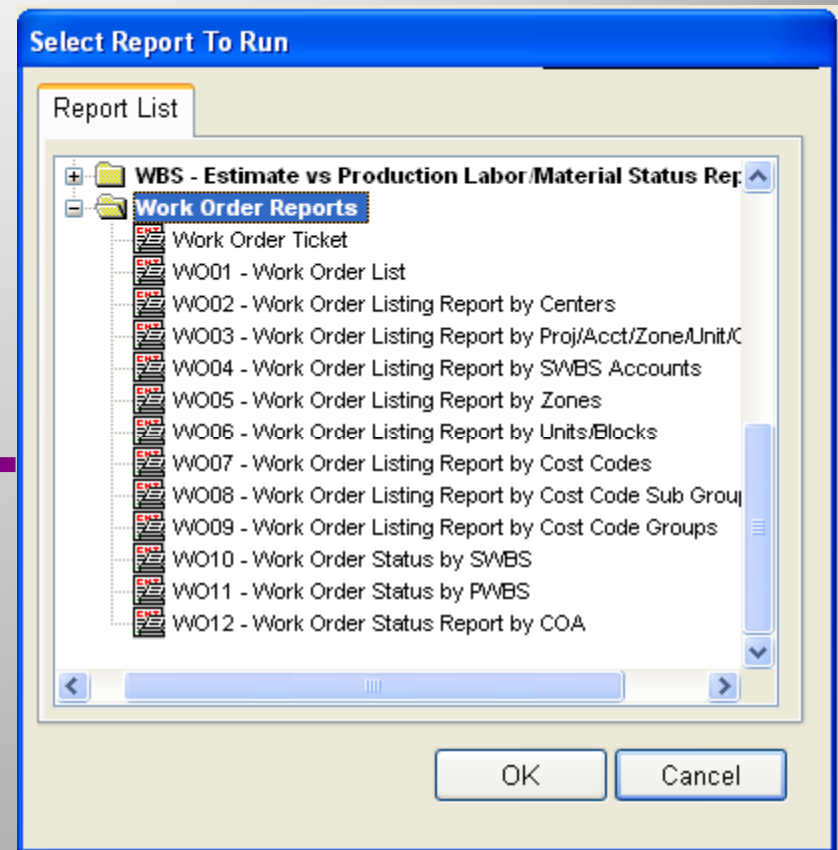


Time Charge Reports

Production Engineering Reports

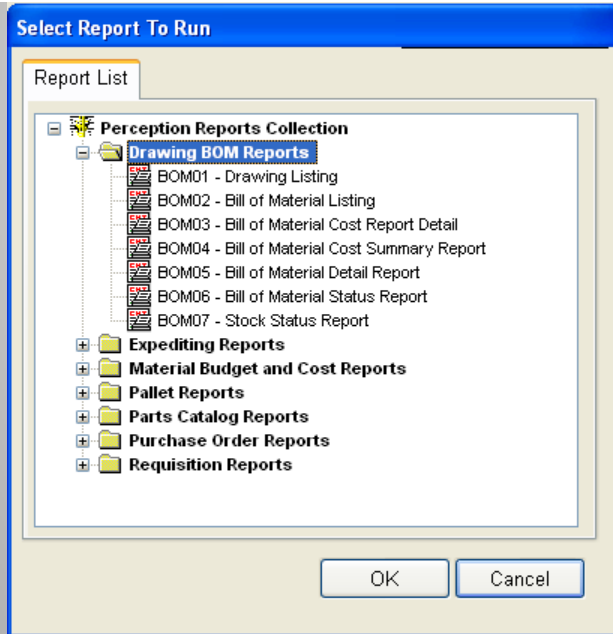


Estimate Vs Production Status Reports

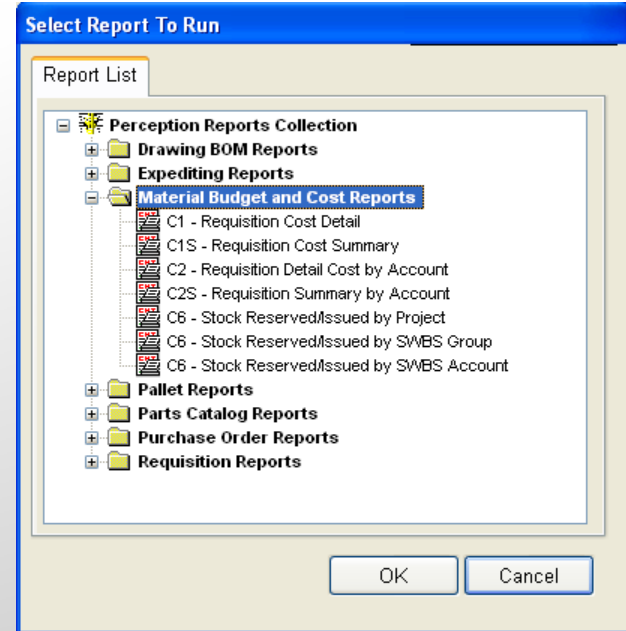


Work Order Reports

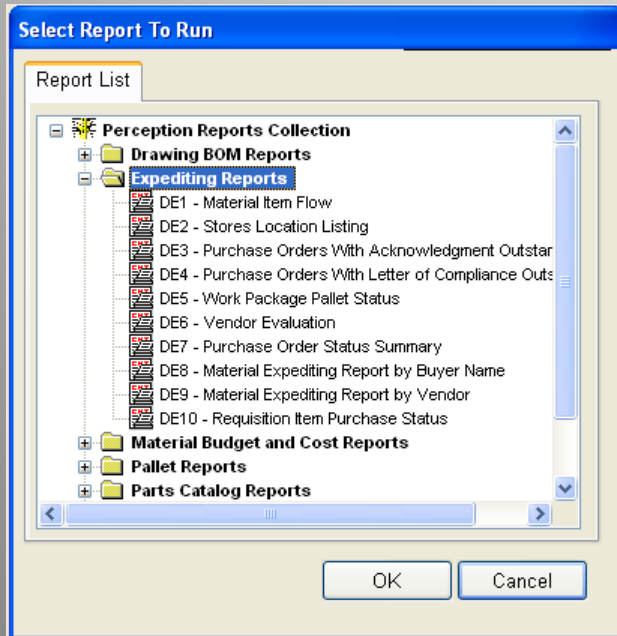
Material Control Reports



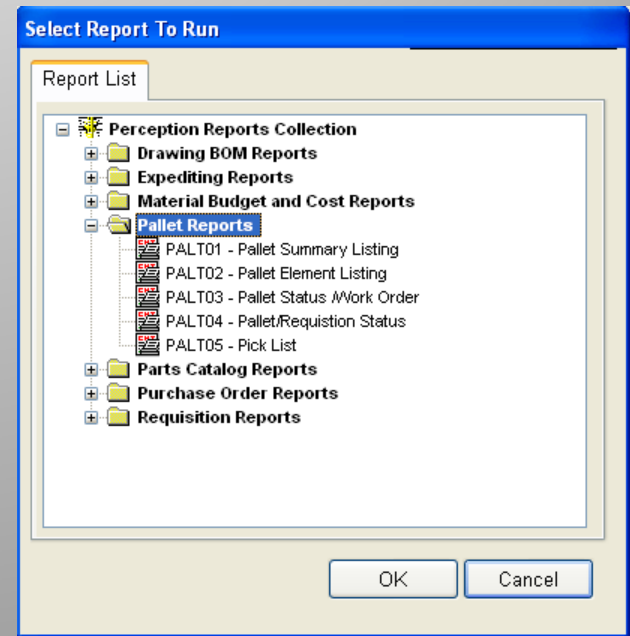
Drawing BOM Reports



Material Budget Reports

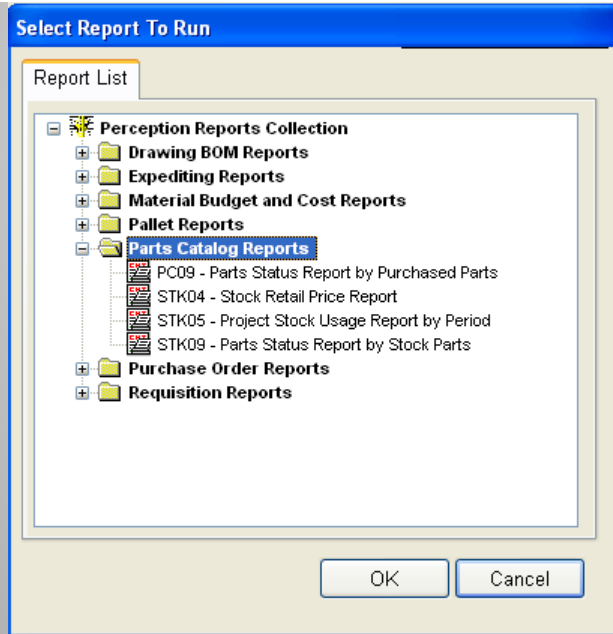


Purchase Expediting Reports

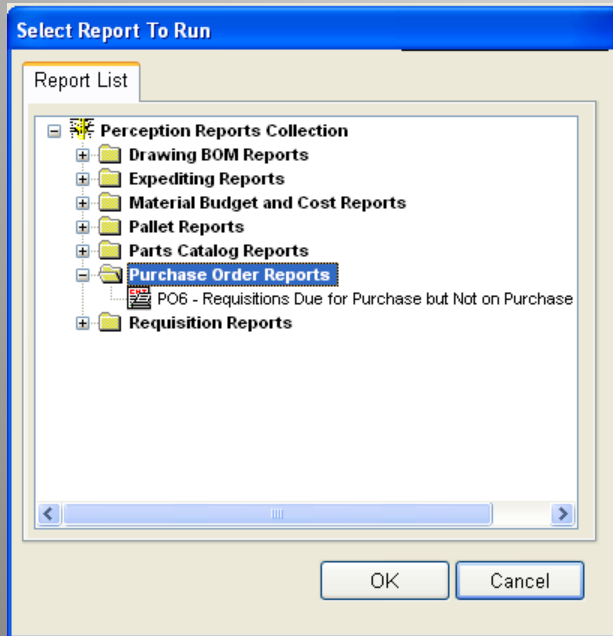


Production Pallet Reports

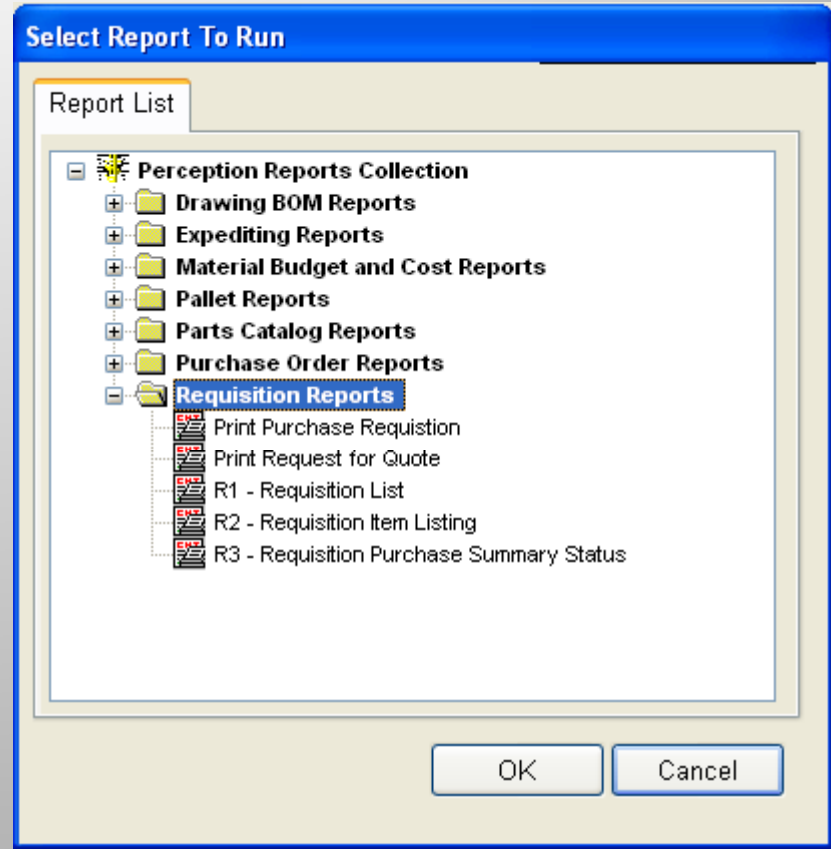
Material Control Reports



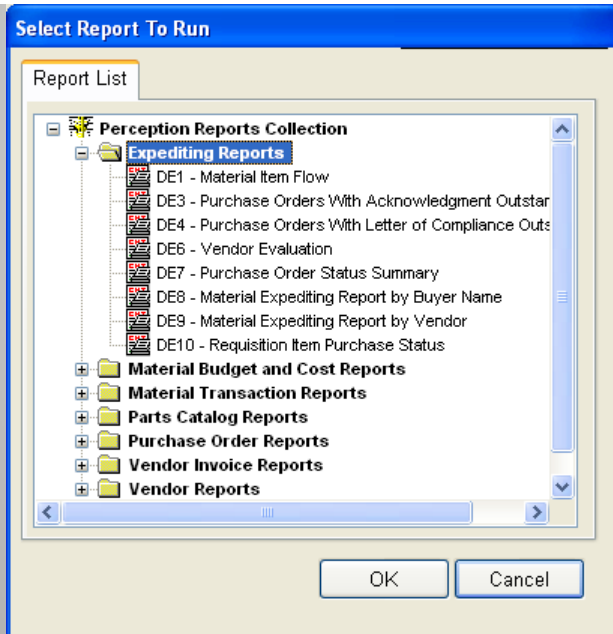
Parts Catalog Reports



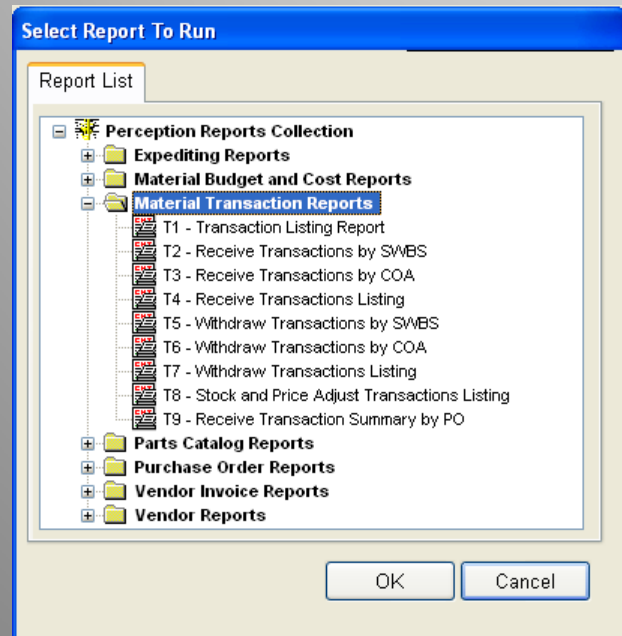
Purchase Order Reports



Material Requisition Reports

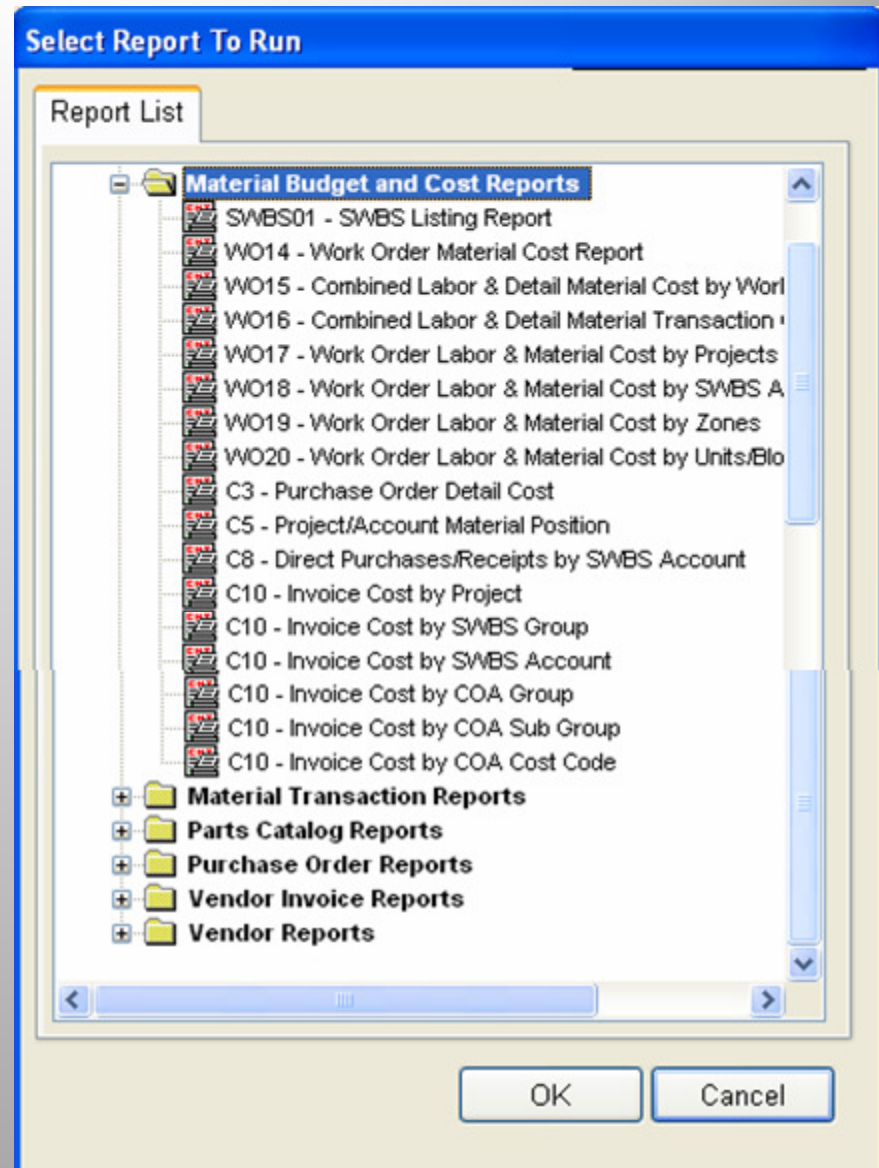


Purchasing Expediting Reports



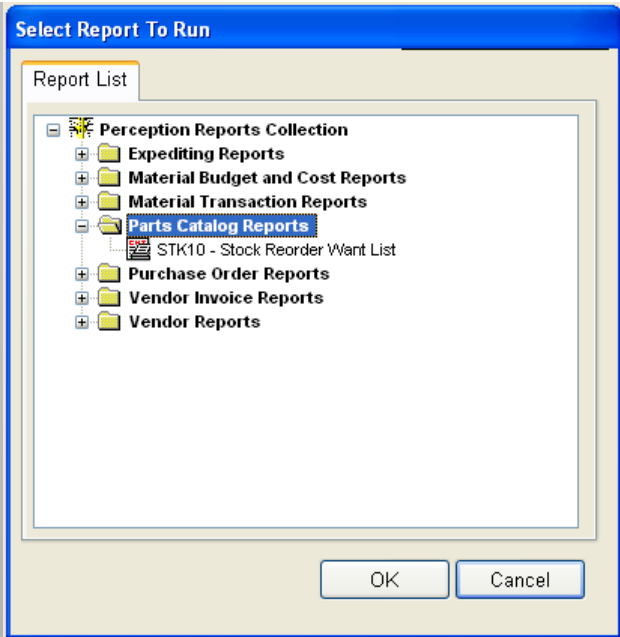
Material Transaction Reports

Purchasing Reports

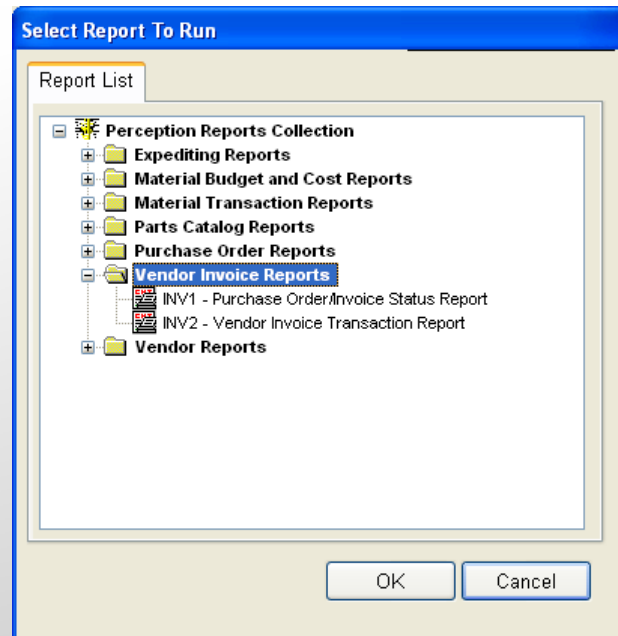


Material Budget Reports

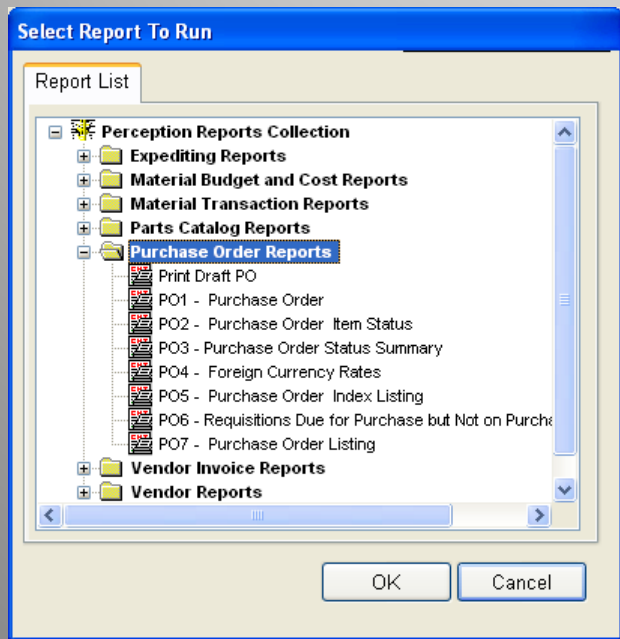
Purchasing Reports



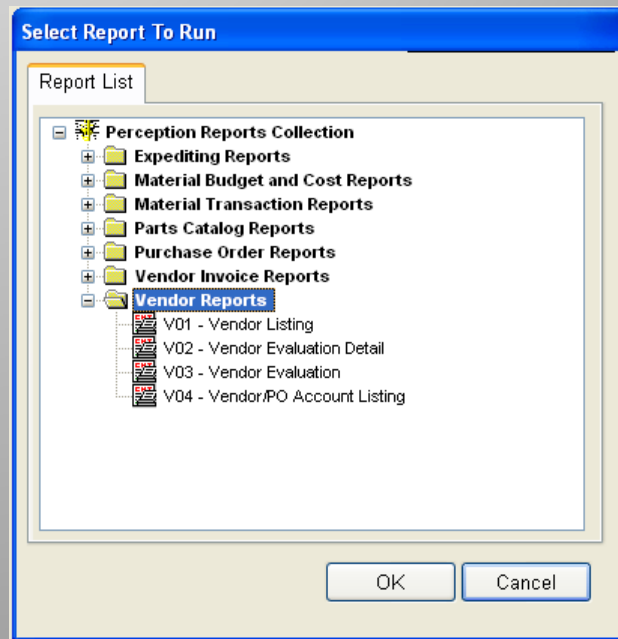
Parts Catalog Reports



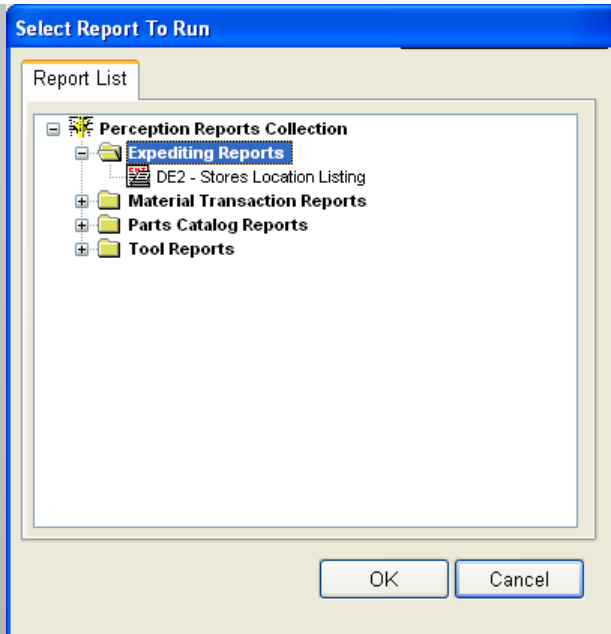
Vendor Invoice Reports



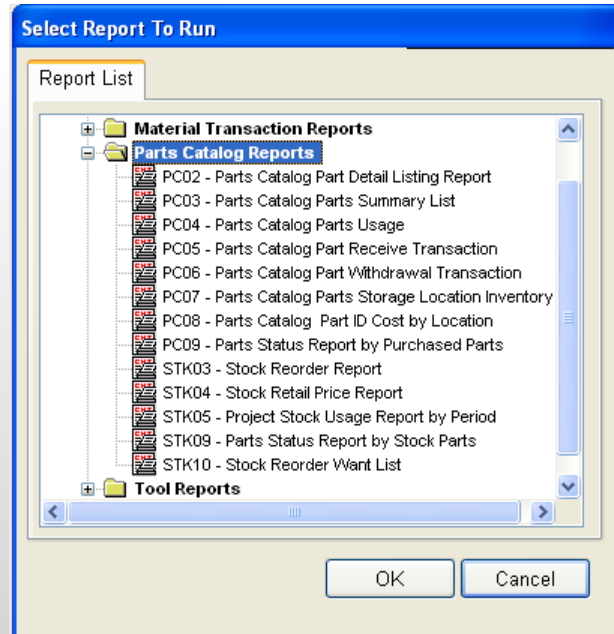
Purchase Order Reports



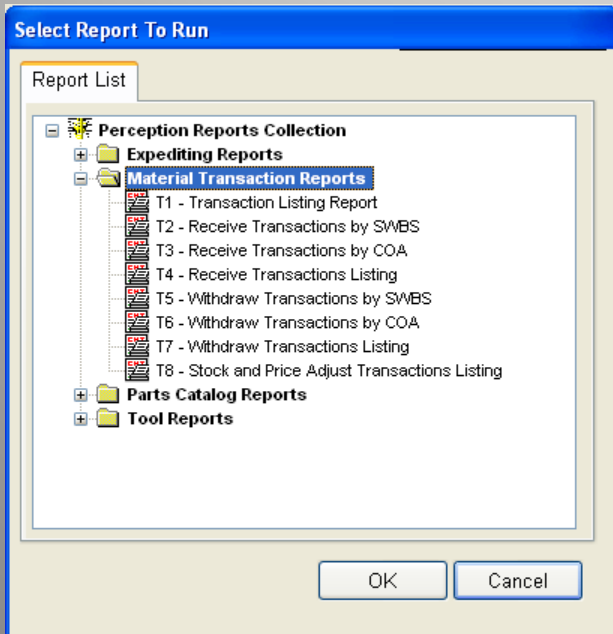
Vendor Reports



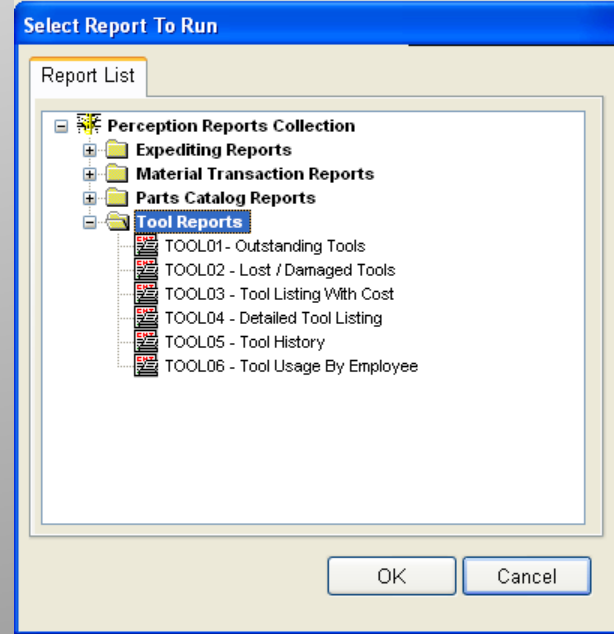
Purchase Expediting Reports



Parts Catalog Reports



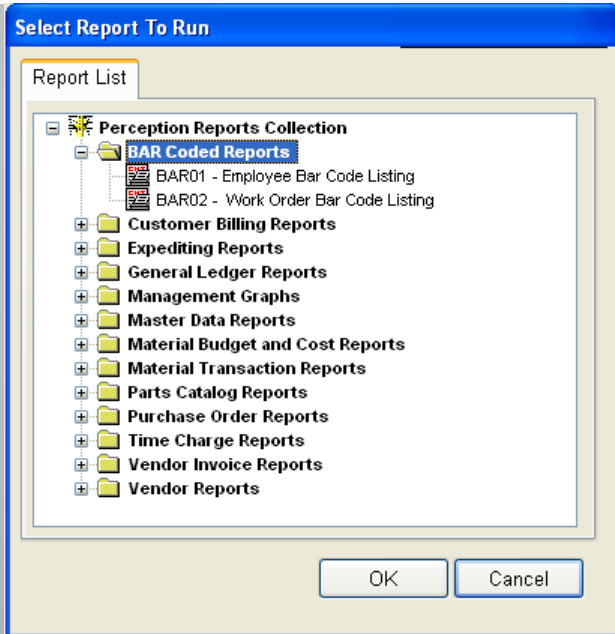
Material Transaction Reports



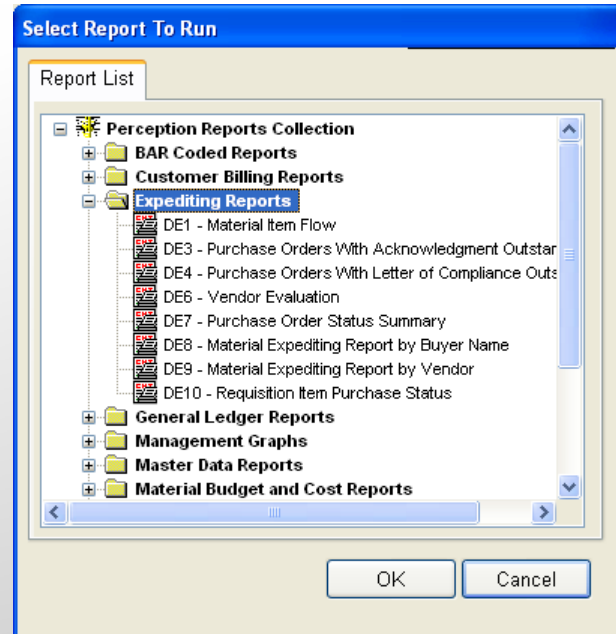
Tool Room Reports

Stores Reports

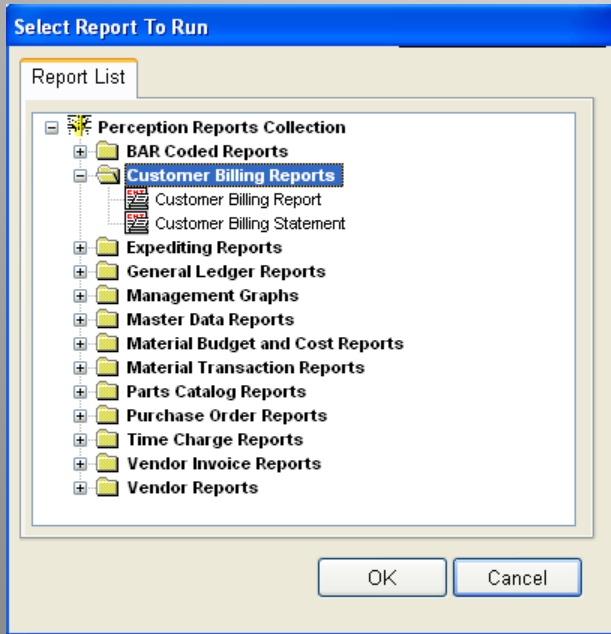
Accounting Reports



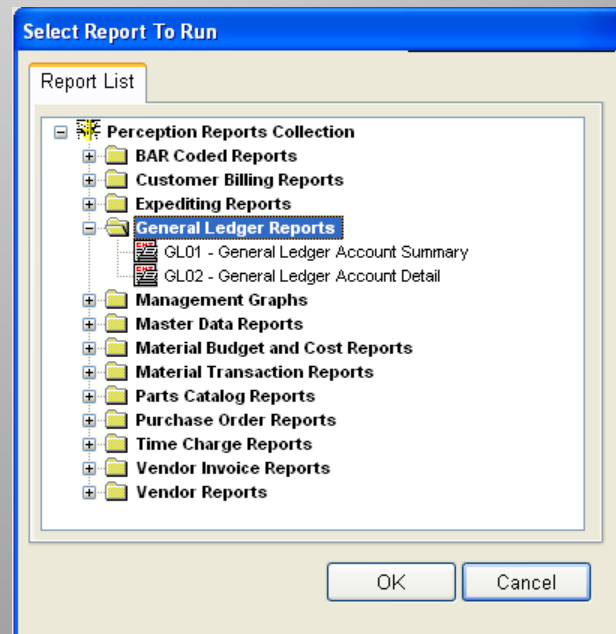
Bar Coded Reports



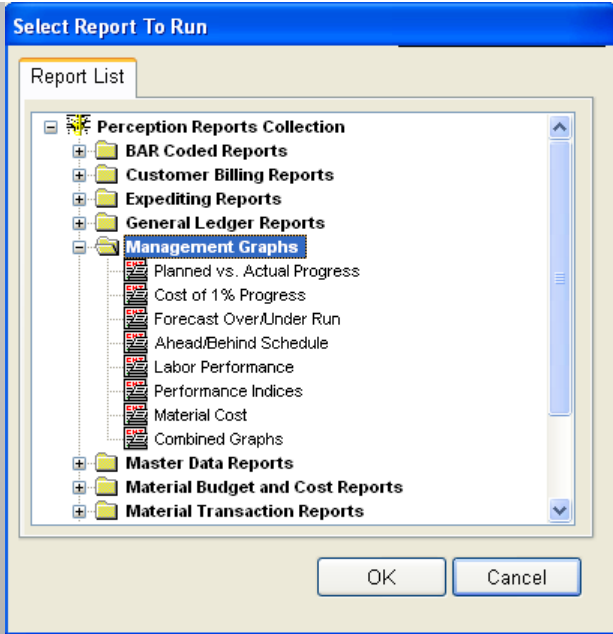
Purchase Expediting Reports



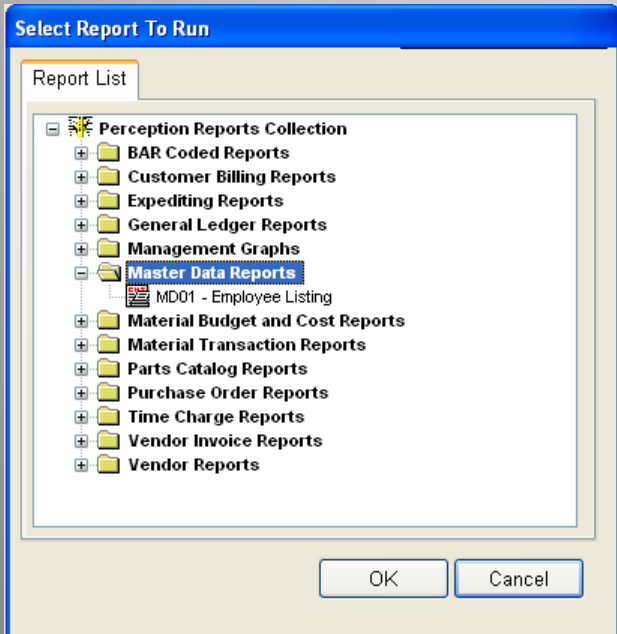
Customer Billing Reports



General Ledger Reports

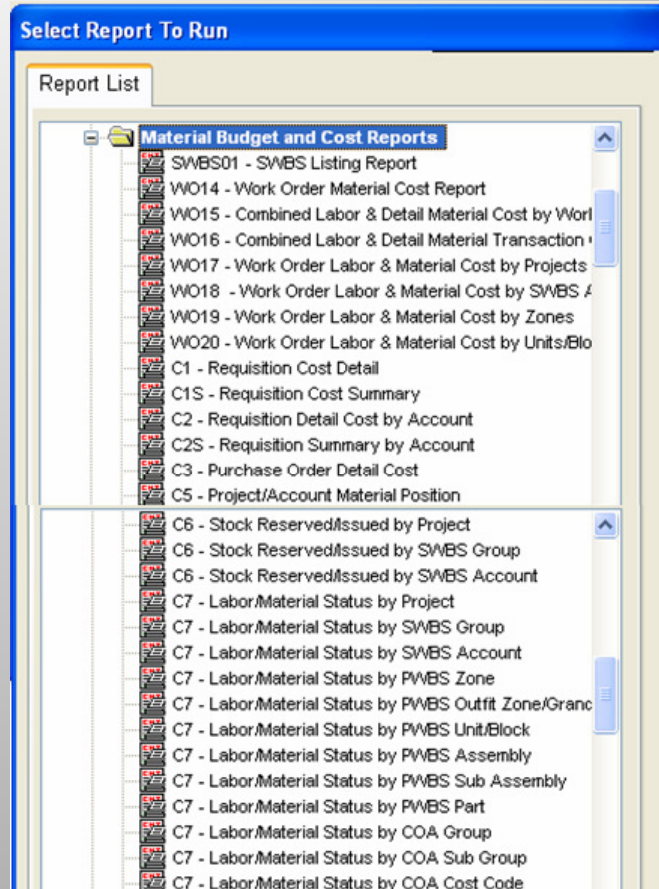


Management Graphics



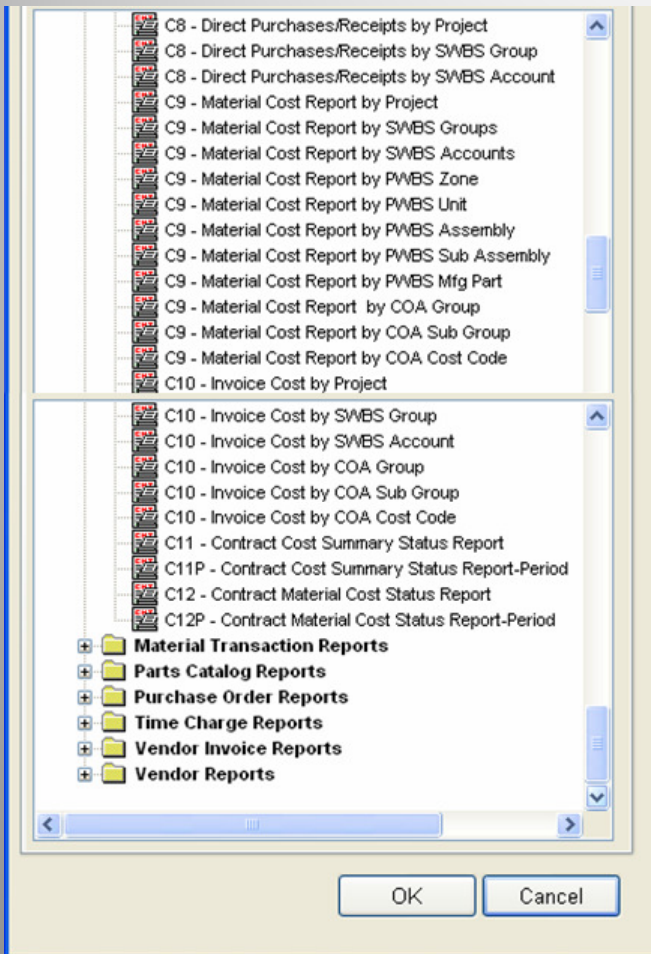
Master Data Reports

Accounting Reports

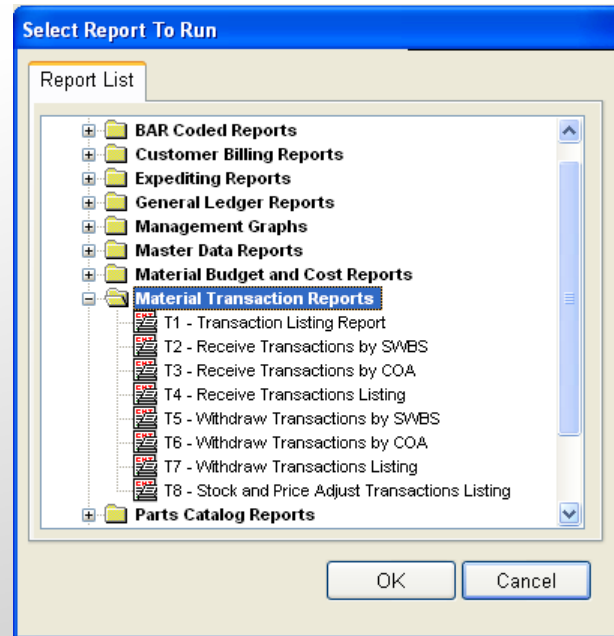


Combined Labor & Material Reports

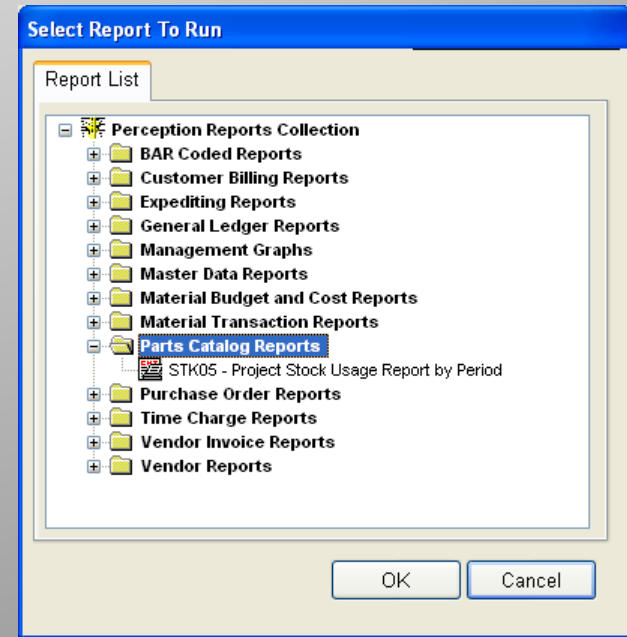
Accounting Reports



Combined Labor & Material Reports

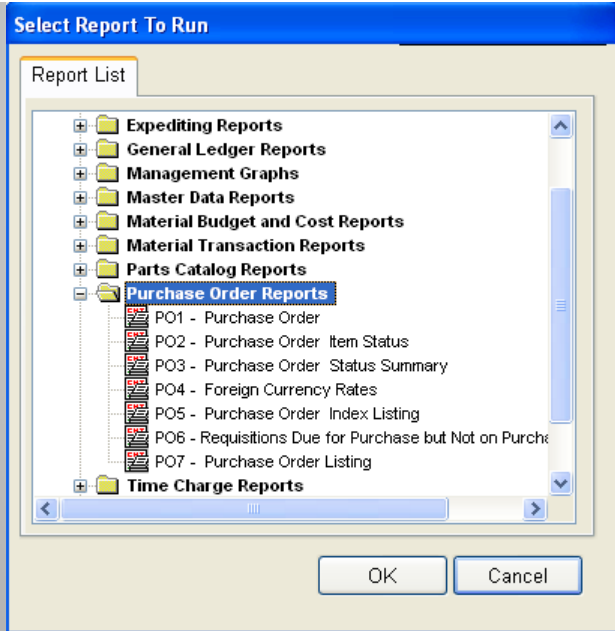


Material Transaction Reports

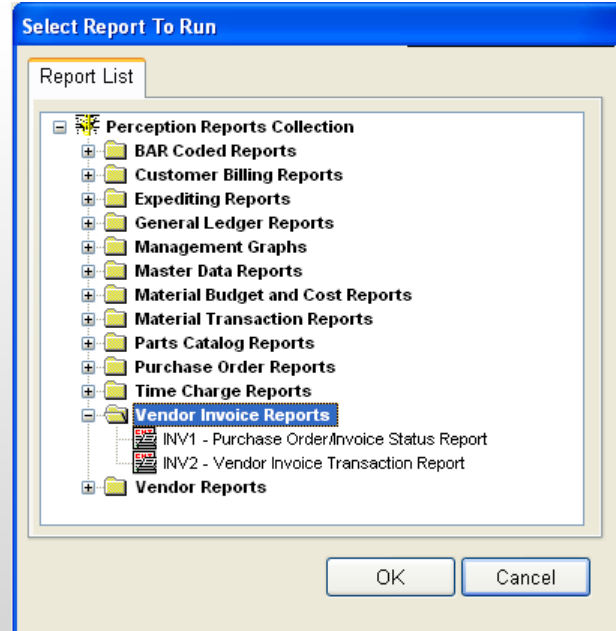


Parts Catalog Reports

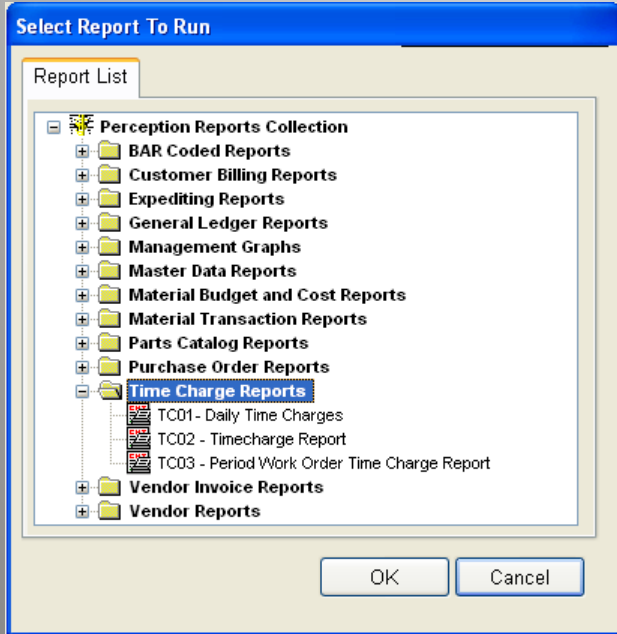
Accounting Reports



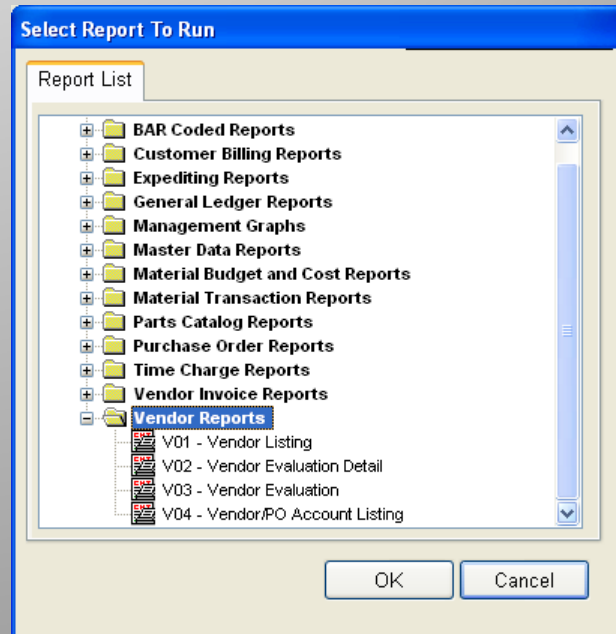
Purchase Order Reports



Vendor Invoice Reports



Time Charge Reports



Vendor Reports

Special Exception Reports

Select Exception To Check

Exception Title	Exception Description
Activity/Center Invalid On Work Orders	If a Work Order has a Planning Activity attached to it, that Activity schedules the Work Order therefore it should be valid.
Activity/Center is Invalid On BOM	When a BOM item has an invalid Activity and Center attached, requisitions created from the BOM will not be correct.
Activity/Center is Invalid On Drawing	Drawing Items should be attached to Drawings that are associated with a valid Activity and Activity Center.
COA Group Is Invalid On BOM Item	When a BOM item is associated with a COA Group, that COA Group should be valid.
COA Group Is Invalid On Pallet Item	When a Pallet Item is associated with a COA Group, that COA Group should be valid.
COA Group Is Invalid On Work Order	When a Work Order has an invalid COA Group, PERCEPTION's internal Labor Costs will not be correct.
COA Group Missing On Work Order	When COA is the default WBS, and a Work Order has no COA Group specified, PERCEPTION's own Labor Cost total will be incorrect.
Drawing is Invalid On Work Orders	If a Work Order is associated with a Drawing, that Drawing should be valid.
Missing Budget and Planned Dates on WO	When a Work Order is missing Planning Data
Missing Budget on Work Order	When a Work Order has a budget of 0.
Missing Planned Dates on Work Order	When a Work Order has no planned start or finish dates
PWBS Zone Is Invalid On BOM Item	When a BOM item has an invalid PWBS Zone, requisitions created from the BOM will not be correct.
PWBS Zone Is Invalid On Pallet Item	When a pallet item has an invalid PWBS Zone, material withdrawn from the pallet item will not be charged correctly.
PWBS Zone Is Invalid On Work Order	When a Work Order has an invalid PWBS Zone, PERCEPTION's internal Labor Costs will not be correct.
PWBS Zone Missing On Work Order	When PWBS is the default WBS, and a Work Order item has no PWBS Zone specified, PERCEPTION's own Labor Costs will be incorrect.
SWBS Account Is Invalid On BOM Item	When a BOM item has an invalid SWBS Account, requisitions created from the BOM will not be correct.
SWBS Account Is Invalid On Pallet Item	When a pallet item has an invalid SWBS Account, material withdrawn from the pallet item will not be charged correctly.
SWBS Account Is Invalid On Work Order	When a Work Order has an invalid SWBS Account, PERCEPTION's internal Labor Costs will not be correct.
SWBS Account Missing On Work Order	When SWBS is the default WBS, and a work order has no SWBS Account specified, PERCEPTION's internal labor costs will be incorrect.